

**Production Worksheet**

Wilcom EmbroideryStudio - Designing

**\*LOVE EMOJI 4X4\***

Design: **Love Emoji 4x4**

Title:

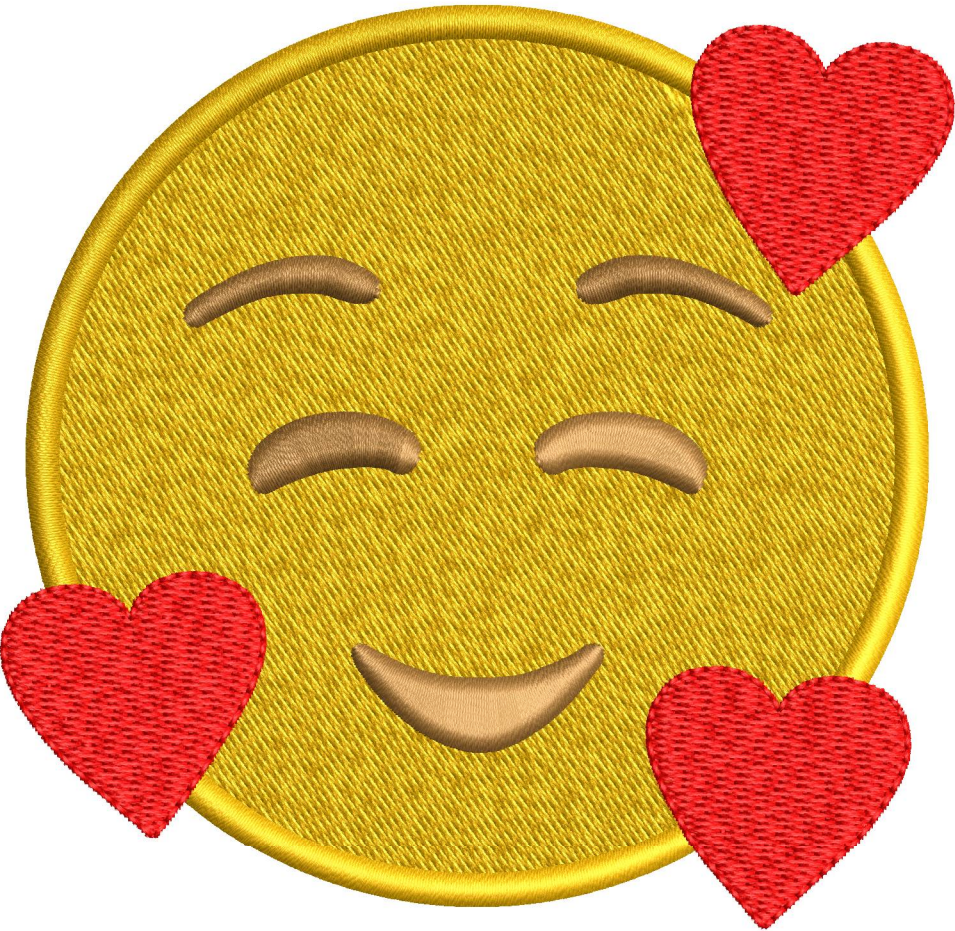
Stitches: 17,010  
 Height: 92.3 mm  
 Width: 95.4 mm  
 Colors: 3  
 Colorway: Colorway 1  
 Zoom: 1.32



Machine format: Tajima  
 Color changes: 2  
 Stops: 3  
 Trims: 9  
 Left: 47.7 mm  
 Right: 47.7 mm  
 Up: 46.2 mm  
 Down: 46.2 mm  
 EndX: 0.0 mm  
 EndY: 0.0 mm  
 Area: 8805.0 mm<sup>2</sup>  
 Max stitch: 9.2 mm  
 Min stitch: 0.2 mm  
 Max jump: 7.0 mm

Stop Sequence:

#	N#	Color	St.	Code	Name	Chart
1.	1		12,297	1068	Canary	Madeira Classic 40
2.	3		13,460	1491		Madeira Classic 40
3.	2		17,008	1037	Red	Madeira Classic 40



# Color Film

Wilcom EmbroideryStudio - Designing

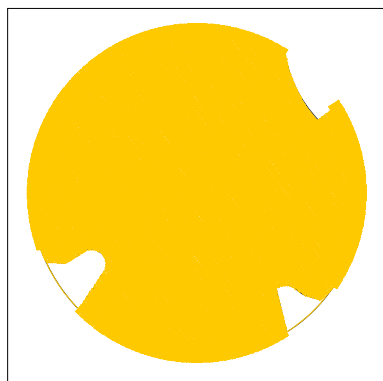
## \*LOVE EMOJI 4X4\*

Design: **Love Emoji 4x4**

Title:

Stitches: 17,010  
Height: 92.3 mm  
Width: 95.4 mm  
Colors: 3  
Colorway: Colorway 1  
Zoom: 0.50

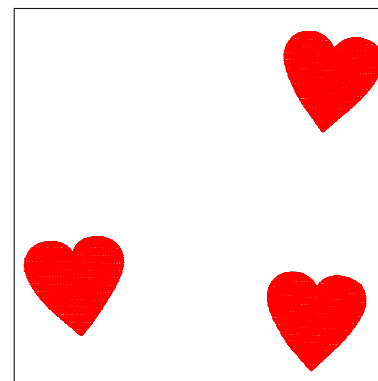
  
support@zdigitizing.com



Stop #: 1  
Element:  
Code: 1068  
Name: Canary  
Chart: Madeira Classic 40  
Stitches: 12,297  
Thread used: 85.04m



Stop #: 2  
Element:  
Code: 1491  
Name:  
Chart: Madeira Classic 40  
Stitches: 1,163  
Thread used: 8.32m



Stop #: 3  
Element:  
Code: 1037  
Name: Red  
Chart: Madeira Classic 40  
Stitches: 3,548  
Thread used: 20.89m