

# Production Worksheet

Wilcom EmbroideryStudio - Designing

\*N\*

Design: N




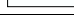
Title:

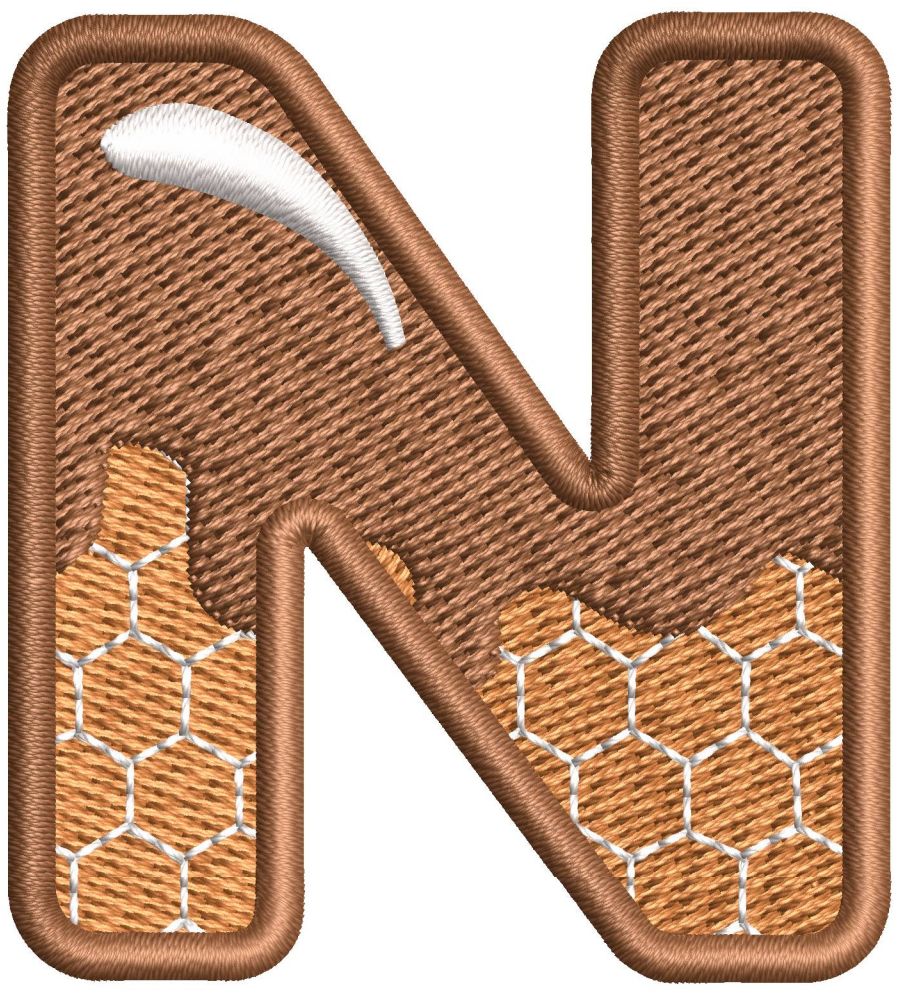
Stitches: 6,810  
Height: 50.3 mm  
Width: 45.8 mm  
Colors: 3  
Colorway: Colorway 1  
Zoom: 2.55

  
support@zdigitizing.com

Machine format: Tajima  
Color changes: 3  
Stops: 4  
Trims: 4  
Left: 22.9 mm  
Right: 22.9 mm  
Up: 25.2 mm  
Down: 25.2 mm  
EndX: 0.0 mm  
EndY: 0.0 mm  
Area: 2304.1 mm<sup>2</sup>  
Max stitch: 9.2 mm  
Min stitch: 0.3 mm  
Max jump: 6.6 mm

Stop Sequence:

#	N#	Color	St.	Code	Name	Chart
1.	1		1,868	1372	Pumpkin Spice	Madeira Classic 40
2.	3		2,371	1003	Cream White	Madeira Classic 40
3.	2		6,639	1057	Caramel	Madeira Classic 40
4.	3		6,808	1003	Cream White	Madeira Classic 40



# Color Film

Wilcom EmbroideryStudio - Designing

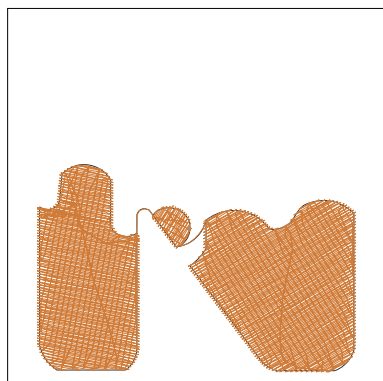
\*N\*

Design: N

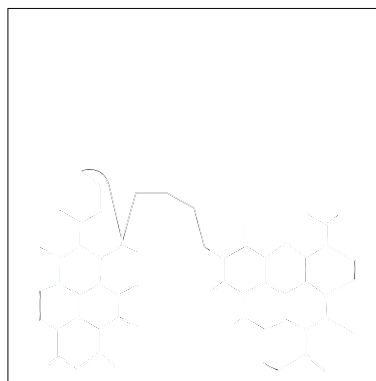
Title:

Stitches: 6,810  
Height: 50.3 mm  
Width: 45.8 mm  
Colors: 3  
Colorway: Colorway 1  
Zoom: 0.94

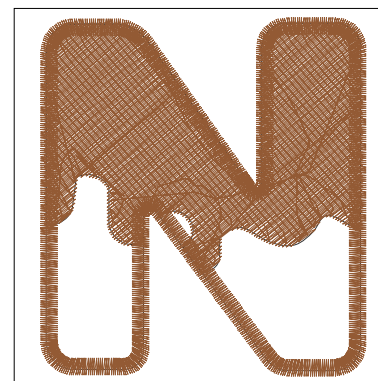
 **digitizing**  
support@zdigitizing.com



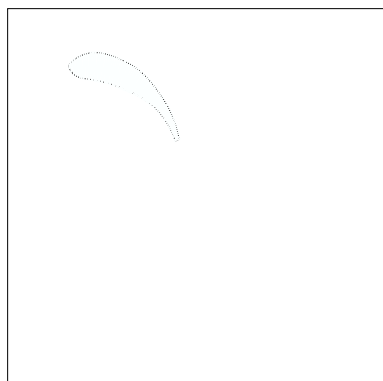
Stop #: 1  
Element:  
Code: 1372  
Name: Pumpkin Spice  
Chart: Madeira Classic 40  
Stitches: 1,868  
Thread used: 11.17m



Stop #: 2  
Element:  
Code: 1003  
Name: Cream White  
Chart: Madeira Classic 40  
Stitches: 503  
Thread used: 2.07m



Stop #: 3  
Element:  
Code: 1057  
Name: Caramel  
Chart: Madeira Classic 40  
Stitches: 4,268  
Thread used: 24.50m



Stop #: 4  
Element:  
Code: 1003  
Name: Cream White  
Chart: Madeira Classic 40  
Stitches: 169  
Thread used: 0.95m