

Production Worksheet

Wilcom EmbroideryStudio - Designing

MUSIC 4X4

Design: **Music 4x4**

Title:

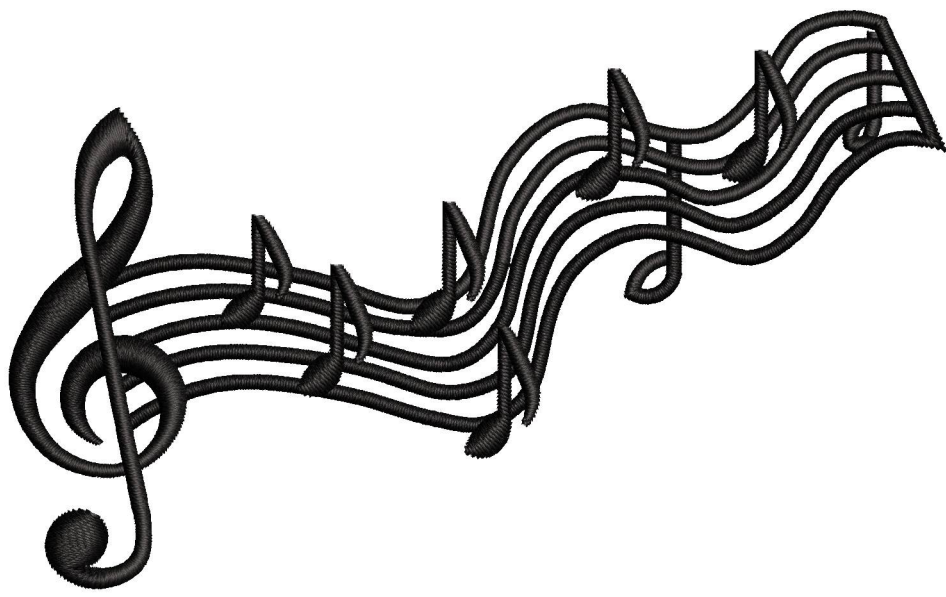
Stitches: 6,666
Height: 58.6 mm
Width: 95.1 mm
Colors: 1
Colorway: Colorway 1
Zoom: 1.30

z digitizing
support@zdigitizing.com
+1 (213) 788-6748

Machine format: Tajima
Color changes: 0
Stops: 1
Trims: 9
Left: 47.5 mm
Right: 47.5 mm
Up: 29.3 mm
Down: 29.3 mm
EndX: 0.0 mm
EndY: 0.0 mm
Area: 5574.3 mm²
Max stitch: 7.0 mm
Min stitch: 0.3 mm
Max jump: 7.0 mm

Stop Sequence:

#	N#	Color	St.	Code	Name	Chart
1.	1	█	6,664	1000		Madeira Classic 40



Color Film

Wilcom EmbroideryStudio - Designing

MUSIC 4X4

Design: **Music 4x4**

Title:

Stitches: 6,666

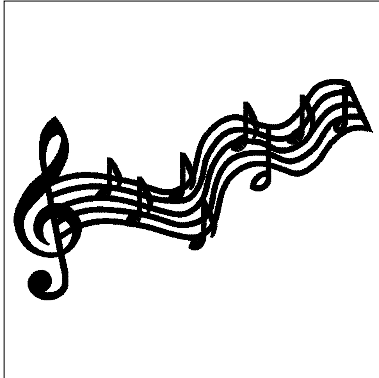
Height: 58.6 mm

Width: 95.1 mm

Colors: 1

Colorway: Colorway 1

Zoom: 0.50



Stop #: 1

Element:

Code: 1000

Name:

Chart: Madeira Classic 40

Stitches: 6,664

Thread used: 28.52m