

Production Worksheet

Wilcom EmbroideryStudio - Designing

GIRL FACE 4X4

Design: **Girl Face 4x4**

Title:

Stitches: 9,423

Height: 94.8 mm

Width: 89.1 mm

Colors: 4

Colorway: Colorway 1

Zoom: 1.28

z digitizing
support@zdigitizing.com
+1 (213) 788-6748

Machine format: Tajima

Color changes: 3

Stops: 4

Trims: 5

Left: 44.5 mm

Right: 44.5 mm

Up: 47.4 mm

Down: 47.4 mm

EndX: 0.0 mm

EndY: 0.0 mm





Area 8440.0 mm²

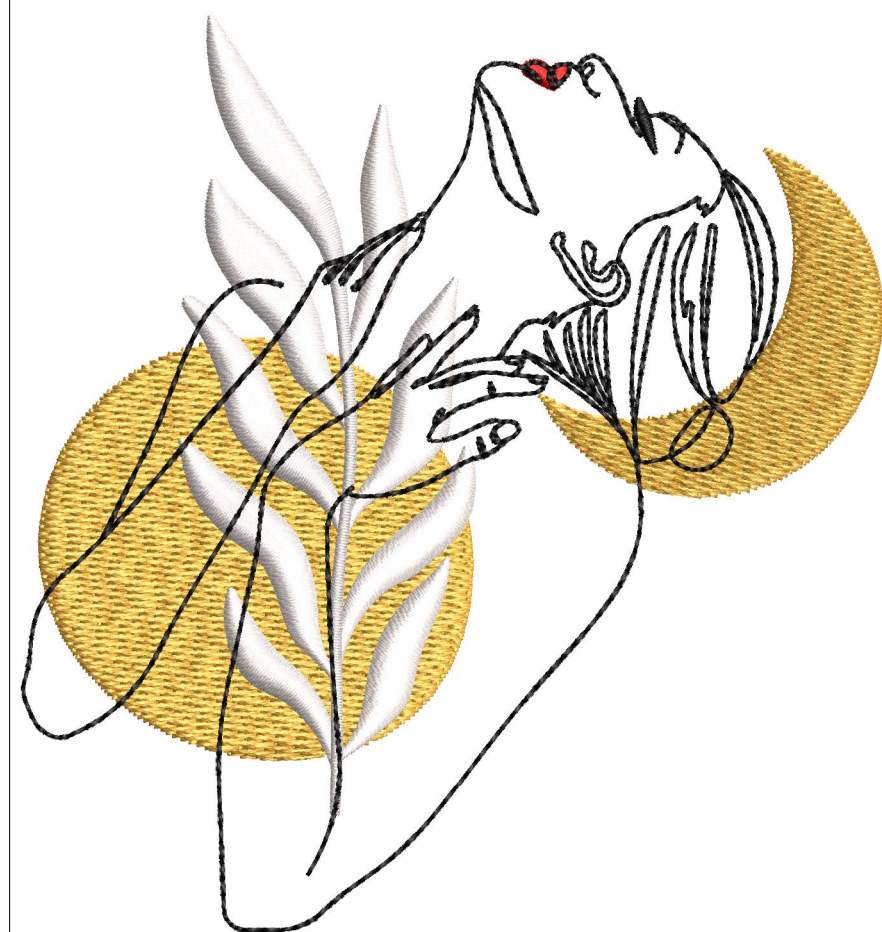
Max stitch: 6.8 mm

Min stitch: 0.0 mm

Max jump: 6.8 mm

Stop Sequence:

#	N#	Color	St.	Code	Name	Chart
1.	4		3,983	1171	Lemon Drop	Madeira Classic 40
2.	3		6,978	1003	Cream White	Madeira Classic 40
3.	1		7,043	1037	Red	Madeira Classic 40
4.	2		9,421	1000	Black	Madeira Classic 40



Color Film

Wilcom EmbroideryStudio - Designing

GIRL FACE 4X4

Design: **Girl Face 4x4**

Title:

Stitches: 9,423

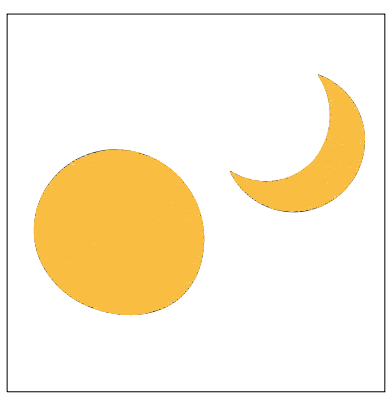
Height: 94.8 mm

Width: 89.1 mm

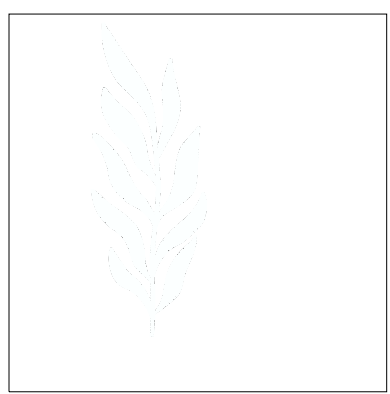
Colors: 4

Colorway: Colorway 1

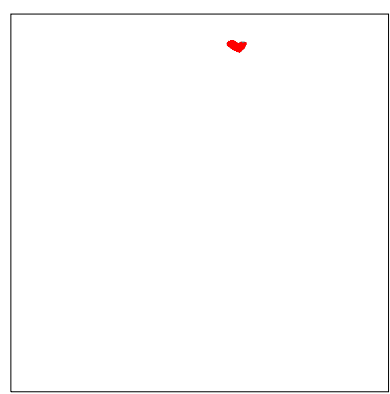
Zoom: 0.50



Stop #: 1
Element:
Code: 1171
Name: Lemon Drop
Chart: Madeira Classic 40
Stitches: 3,983
Thread used: 26.13m



Stop #: 2
Element:
Code: 1003
Name: Cream White
Chart: Madeira Classic 40
Stitches: 2,995
Thread used: 17.59m



Stop #: 3
Element:
Code: 1037
Name: Red
Chart: Madeira Classic 40
Stitches: 65
Thread used: 0.26m



Stop #: 4
Element:
Code: 1000
Name: Black
Chart: Madeira Classic 40
Stitches: 2,378
Thread used: 9.34m