

# Production Worksheet

Wilcom EmbroideryStudio - Designing

## \*GIRL FACE 5X5\*

Design: **Girl Face 5x5**





Title:

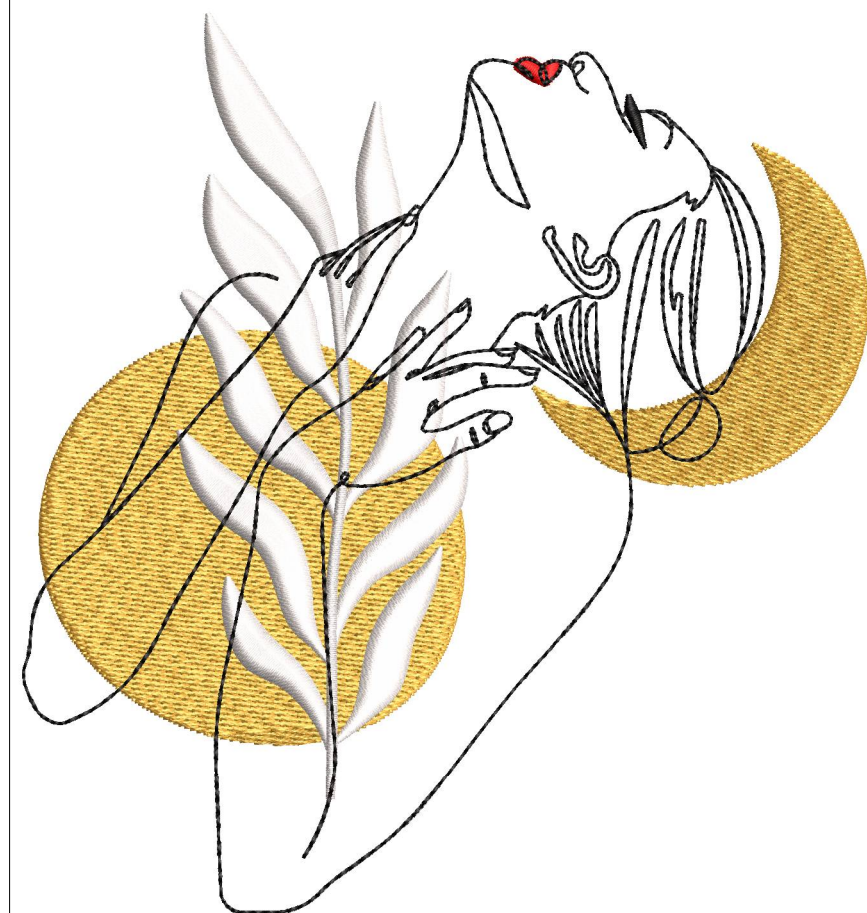
Stitches: 13,961  
Height: 126.8 mm  
Width: 119.1 mm  
Colors: 4  
Colorway: Colorway 1  
Zoom: 0.94

**z digitizing**  
support@zdigitizing.com  
+1 (213) 788-6748

Machine format: Tajima  
Color changes: 3  
Stops: 4  
Trims: 5  
Left: 59.5 mm  
Right: 59.5 mm  
Up: 63.4 mm  
Down: 63.4 mm  
EndX: 0.0 mm  
EndY: 0.0 mm  
Area: 15095.1 mm<sup>2</sup>  
Max stitch: 8.1 mm  
Min stitch: 0.0 mm  
Max jump: 7.0 mm

Stop Sequence:

#	N#	Color	St.	Code	Name	Chart
1.	4		6,807	1171	Lemon Drop	Madeira Classic 40
2.	3		10,831	1003	Cream White	Madeira Classic 40
3.	1		10,915	1037	Red	Madeira Classic 40
4.	2		13,959	1000	Black	Madeira Classic 40



# Color Film

Wilcom EmbroideryStudio - Designing

## \*GIRL FACE 5X5\*

Design: **Girl Face 5x5**

Title:

Stitches: 13,961

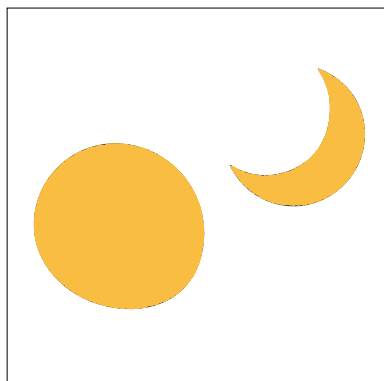
Height: 126.8 mm

Width: 119.1 mm

Colors: 4

Colorway: Colorway 1

Zoom: 0.37



Stop #: 1

Element:

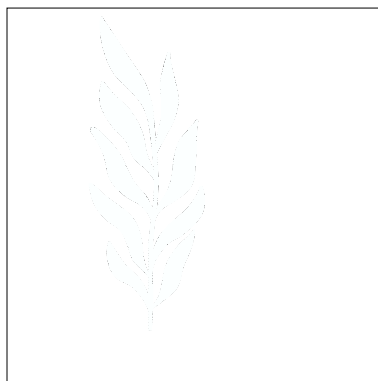
Code: 1171

Name: Lemon Drop

Chart: Madeira Classic 40

Stitches: 6,807

Thread used: 45.92m



Stop #: 2

Element:

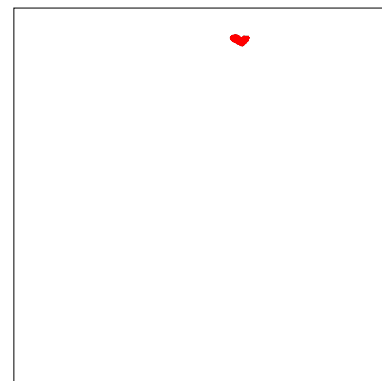
Code: 1003

Name: Cream White

Chart: Madeira Classic 40

Stitches: 4,024

Thread used: 28.31m



Stop #: 3

Element:

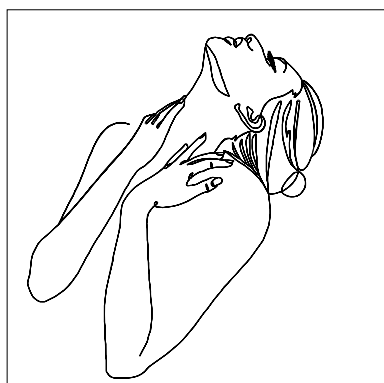
Code: 1037

Name: Red

Chart: Madeira Classic 40

Stitches: 84

Thread used: 0.38m



Stop #: 4

Element:

Code: 1000

Name: Black

Chart: Madeira Classic 40

Stitches: 3,044

Thread used: 12.28m