

**Production Worksheet**

Wilcom EmbroideryStudio - Designing

**\*TREE C 5X5\***

Design: **Tree C 5x5**

Title:

Stitches: 12,089  
Height: 126.8 mm  
Width: 96.8 mm  
Colors: 1  
Colorway: Colorway 1  
Zoom: 1.26

**z digitizing**  
support@zdigitizing.com  
**+1 (213) 788-6748**

Machine format: Tajima  
Color changes: 0  
Stops: 1  
Trims: 39  
Left: 48.4 mm  
Right: 48.4 mm  
Up: 63.4 mm  
Down: 63.4 mm  
EndX: 0.0 mm  
EndY: 0.0 mm  
Area: 12270.6 mm<sup>2</sup>  
Max stitch: 12.1 mm  
Min stitch: 0.3 mm  
Max jump: 7.0 mm

Stop Sequence:

#	N#	Color	St.	Code	Name	Chart
1.	1	█	12,087	1000	Black	Madeira Classic 40



# Color Film

Wilcom EmbroideryStudio - Designing

**\*TREE C 5X5\***

Design: **Tree C 5x5**

Title:

Stitches: 12,089

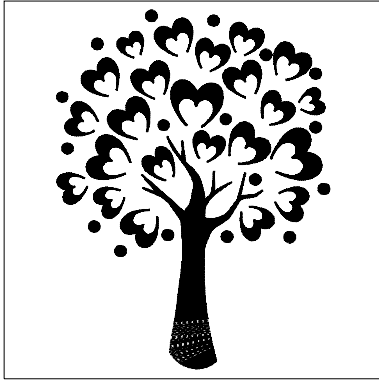
Height: 126.8 mm

Width: 96.8 mm

Colors: 1

Colorway: Colorway 1

Zoom: 0.37



Stop #: 1

Element:

Code: 1000

Name: Black

Chart: Madeira Classic 40

Stitches: 12,087

Thread used: 69.10m