

# Production Worksheet

Wilcom EmbroideryStudio - Designing

## \*BEE A 3X3\*

Design: **Bee A 3x3**

Title:

Stitches: 4,516

Height: 64.0 mm

Width: 76.2 mm

Colors: 5

Colorway: Colorway 1

Zoom: 1.46

**z digitizing**  
support@zdigitizing.com  
+1 (213) 788-6748

Machine format: Tajima

Color changes: 4

Stops: 5

Trims: 10

Left: 38.1 mm

Right: 38.1 mm

Up: 32.0 mm

Down: 32.0 mm

EndX: 0.0 mm

EndY: 0.0 mm

Area: 4874.0 mm<sup>2</sup>

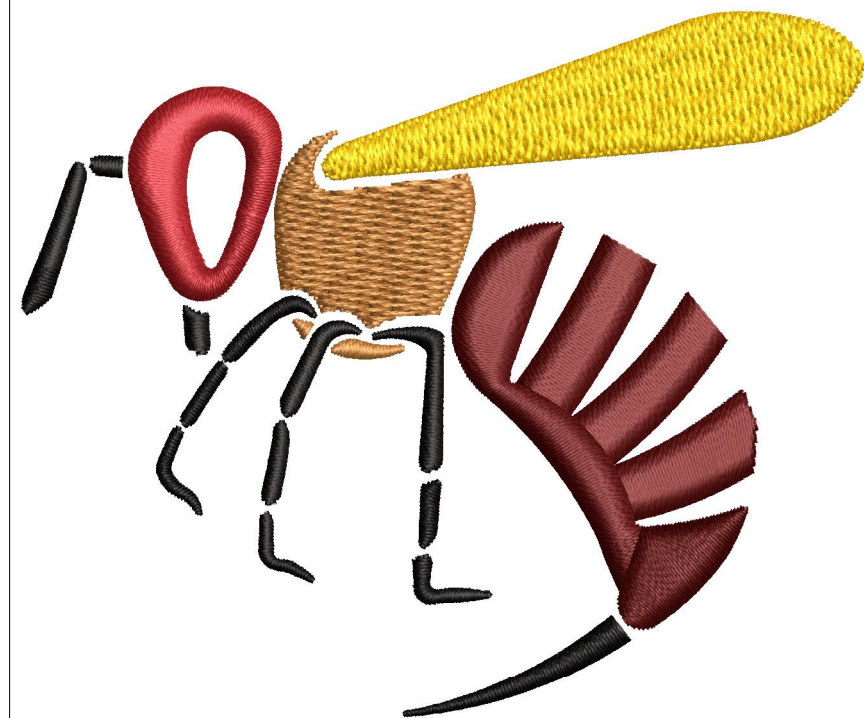
Max stitch: 7.3 mm

Min stitch: 0.2 mm

Max jump: 6.5 mm

Stop Sequence:

#	N#	Color	St.	Code	Name	Chart
1.	2	Black	985	1000	Black	Madeira Classic 40
2.	3	Dark Red	2,269	1481		Madeira Classic 40
3.	4	Autumn Gold	2,916	1173	Autumn Gold	Madeira Classic 40
4.	1	Goldenrod	3,922	1064	Goldenrod	Madeira Classic 40
5.	5	Christmas Red	4,514	1147	Christmas Red	Madeira Classic 40



**Color Film**

Wilcom EmbroideryStudio - Designing

**\*BEE A 3X3\***

Design: **Bee A 3x3**

Title:

Stitches: 4,516

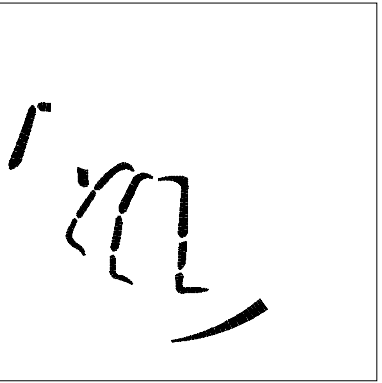
Height: 64.0 mm

Width: 76.2 mm

Colors: 5

Colorway: Colorway 1

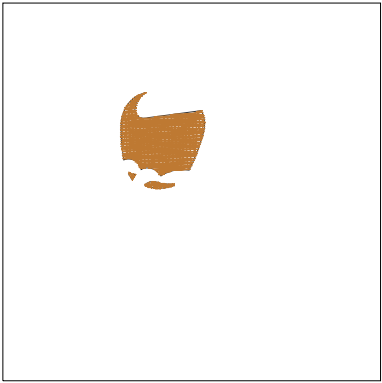
Zoom: 0.62



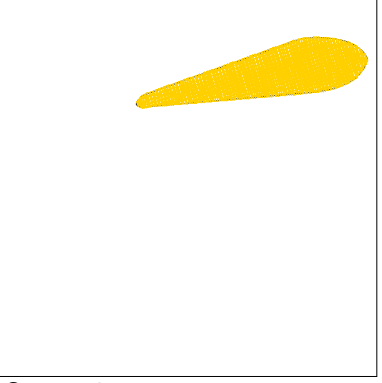
Stop #: 1  
Element:  
Code: 1000  
Name: Black  
Chart: Madeira Classic 40  
Stitches: 985  
Thread used: 3.88m



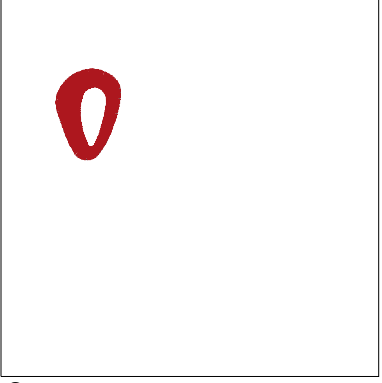
Stop #: 2  
Element:  
Code: 1481  
Name:  
Chart: Madeira Classic 40  
Stitches: 1,284  
Thread used: 10.55m



Stop #: 3  
Element:  
Code: 1173  
Name: Autumn Gold  
Chart: Madeira Classic 40  
Stitches: 647  
Thread used: 3.40m



Stop #: 4  
Element:  
Code: 1064  
Name: Goldenrod  
Chart: Madeira Classic 40  
Stitches: 1,006  
Thread used: 5.69m



Stop #: 5  
Element:  
Code: 1147  
Name: Christmas Red  
Chart: Madeira Classic 40  
Stitches: 592  
Thread used: 3.84m