

Production Worksheet

Wilcom EmbroideryStudio - Designing

BEE A 4X4

Design: **Bee A 4x4**

Title:

Stitches: 5,861

Height: 79.6 mm

Width: 94.9 mm

Colors: 5

Colorway: Colorway 1

Zoom: 1.17

z digitizing
support@zdigitizing.com
+1 (213) 788-6748

Machine format: Tajima

Color changes: 4

Stops: 5

Trims: 11

Left: 47.4 mm

Right: 47.4 mm

Up: 39.8 mm

Down: 39.8 mm

EndX: 0.0 mm

EndY: 0.0 mm

Area: 7552.1 mm²

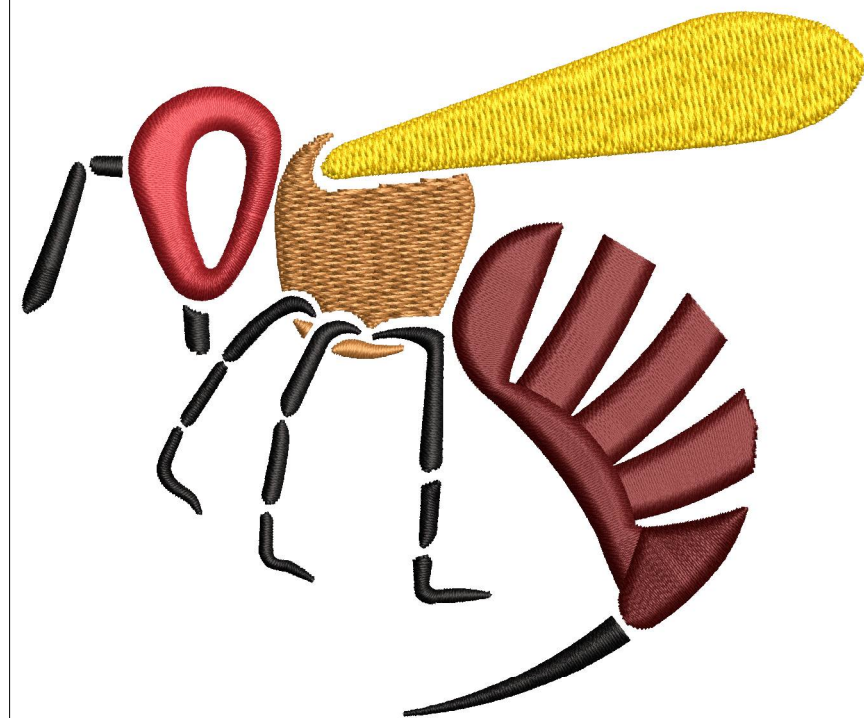
Max stitch: 9.0 mm

Min stitch: 0.0 mm

Max jump: 6.6 mm

Stop Sequence:

#	N#	Color	St.	Code	Name	Chart
1.	2		1,197	1000	Black	Madeira Classic 40
2.	3		2,783	1481		Madeira Classic 40
3.	4		3,678	1173	Autumn Gold	Madeira Classic 40
4.	1		5,127	1064	Goldenrod	Madeira Classic 40
5.	5		5,859	1147	Christmas Red	Madeira Classic 40



Color Film

Wilcom EmbroideryStudio - Designing

BEE A 4X4

Design: **Bee A 4x4**

Title:

Stitches: 5,861

Height: 79.6 mm

Width: 94.9 mm

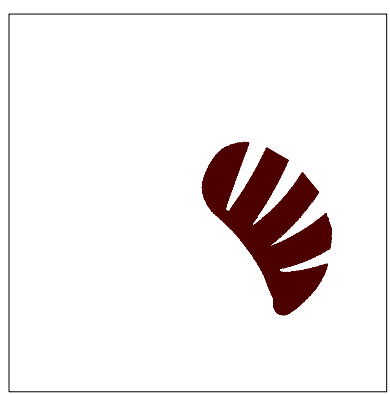
Colors: 5

Colorway: Colorway 1

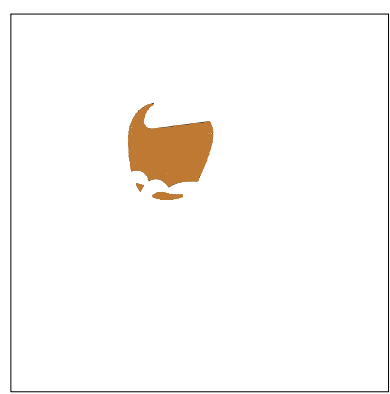
Zoom: 0.50



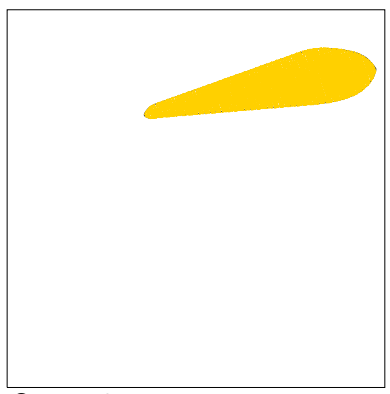
Stop #: 1
Element:
Code: 1000
Name: Black
Chart: Madeira Classic 40
Stitches: 1,197
Thread used: 5.16m



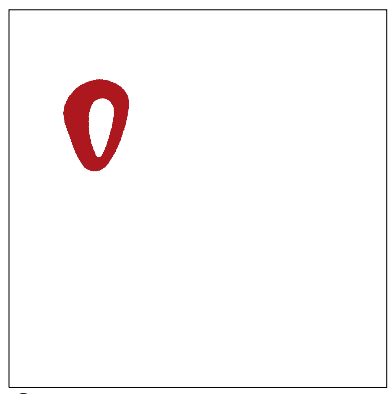
Stop #: 2
Element:
Code: 1481
Name:
Chart: Madeira Classic 40
Stitches: 1,586
Thread used: 15.40m



Stop #: 3
Element:
Code: 1173
Name: Autumn Gold
Chart: Madeira Classic 40
Stitches: 895
Thread used: 4.98m



Stop #: 4
Element:
Code: 1064
Name: Goldenrod
Chart: Madeira Classic 40
Stitches: 1,449
Thread used: 8.52m



Stop #: 5
Element:
Code: 1147
Name: Christmas Red
Chart: Madeira Classic 40
Stitches: 732
Thread used: 5.55m