

**Production Worksheet**

Wilcom EmbroideryStudio - Designing

**\*BEE C 4X4\***

Design: **Bee C 4x4**





Title:

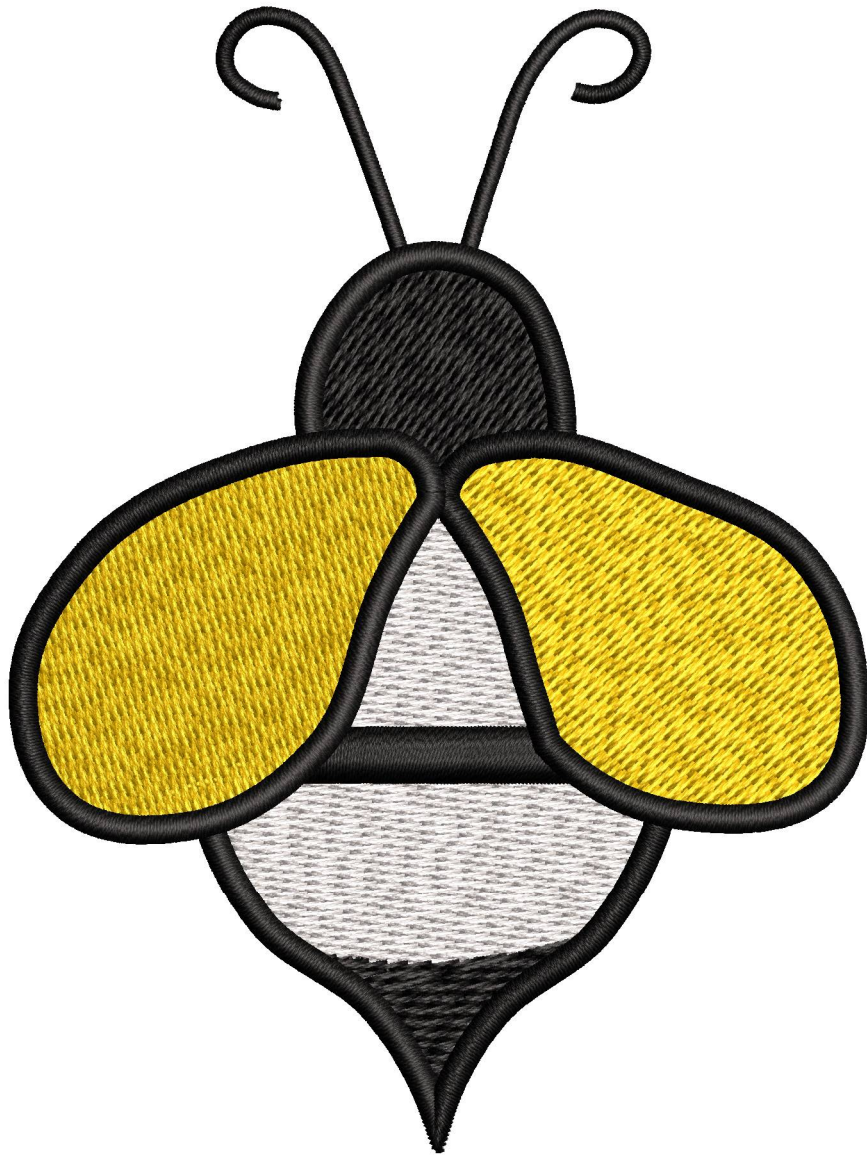
Stitches: 9,886  
Height: 95.1 mm  
Width: 71.3 mm  
Colors: 3  
Colorway: Colorway 1  
Zoom: 1.59

**z digitizing**  
support@zdigitizing.com  
**+1 (213) 788-6748**

Machine format: Tajima  
Color changes: 3  
Stops: 4  
Trims: 5  
Left: 35.6 mm  
Right: 35.7 mm  
Up: 47.5 mm  
Down: 47.5 mm  
EndX: 0.0 mm  
EndY: 0.0 mm  
Area: 6776.9 mm<sup>2</sup>  
Max stitch: 6.6 mm  
Min stitch: 0.3 mm  
Max jump: 6.6 mm

Stop Sequence:

| #  | N# | Color  | St.   | Code | Name        | Chart              |
|----|----|--|-------|------|-------------|--------------------|
| 1. | 3  |  | 2,324 | 1003 | Cream White | Madeira Classic 40 |
| 2. | 2  |  | 5,099 | 1000 | Black       | Madeira Classic 40 |
| 3. | 1  |  | 8,348 | 1064 | Goldenrod   | Madeira Classic 40 |
| 4. | 2  |  | 9,884 | 1000 | Black       | Madeira Classic 40 |



# Color Film

Wilcom EmbroideryStudio - Designing

## \*BEE C 4X4\*

Design: **Bee C 4x4**

Title:

Stitches: 9,886

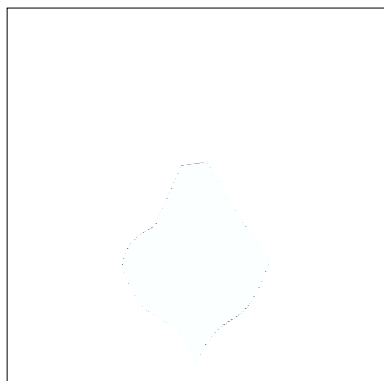
Height: 95.1 mm

Width: 71.3 mm

Colors: 3

Colorway: Colorway 1

Zoom: 0.50



Stop #: 1

Element:

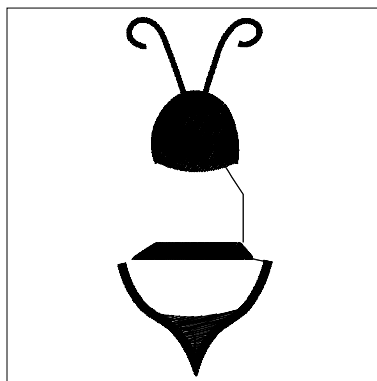
Code: 1003

Name: Cream White

Chart: Madeira Classic 40

Stitches: 2,324

Thread used: 15.17m



Stop #: 2

Element:

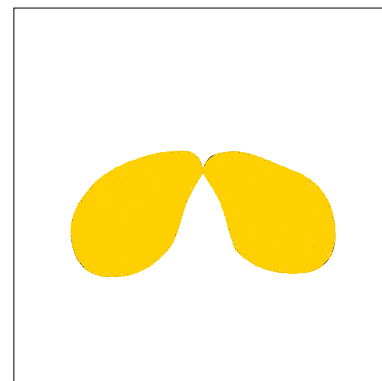
Code: 1000

Name: Black

Chart: Madeira Classic 40

Stitches: 2,775

Thread used: 14.91m



Stop #: 3

Element:

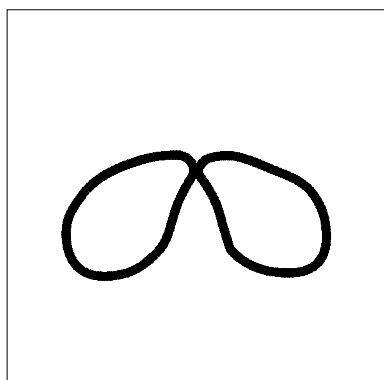
Code: 1064

Name: Goldenrod

Chart: Madeira Classic 40

Stitches: 3,249

Thread used: 20.91m



Stop #: 4

Element:

Code: 1000

Name: Black

Chart: Madeira Classic 40

Stitches: 1,536

Thread used: 7.83m