

Production Worksheet

Wilcom EmbroideryStudio - Designing

HEART A 5X5

Design: **Heart A 5x5**

Title:

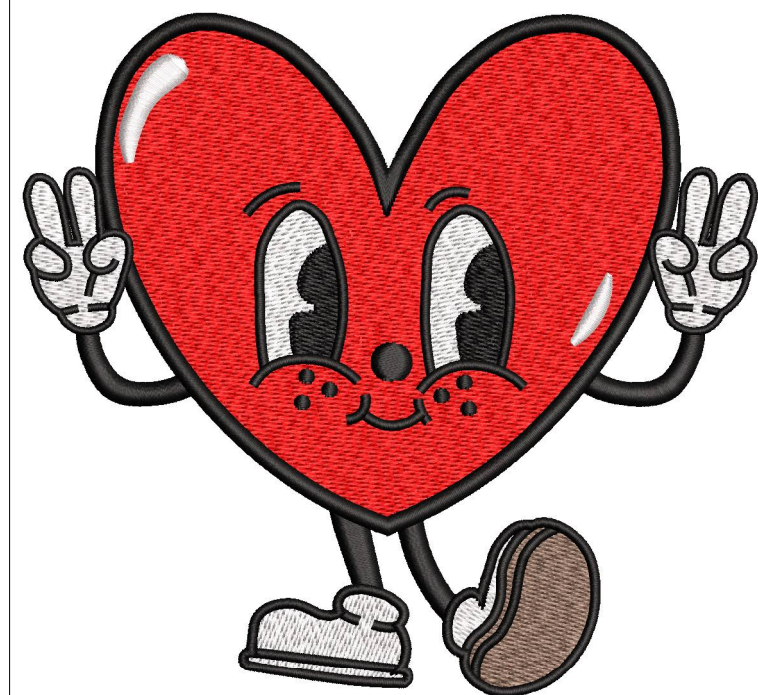
Stitches: 26,642
Height: 118.6 mm
Width: 127.0 mm
Colors: 4
Colorway: Colorway 1
Zoom: 0.76

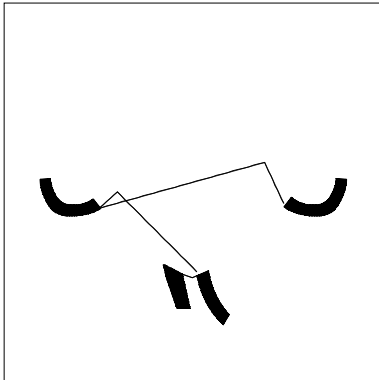
z digitizing
support@zdigitizing.com
+1 (213) 788-6748

Machine format: Tajima
Color changes: 9
Stops: 10
Trims: 28
Left: 63.5 mm
Right: 63.5 mm
Up: 59.3 mm
Down: 59.3 mm
EndX: 0.0 mm
EndY: 0.0 mm
Area: 15071.7 mm²
Max stitch: 8.2 mm
Min stitch: 0.2 mm
Max jump: 7.0 mm

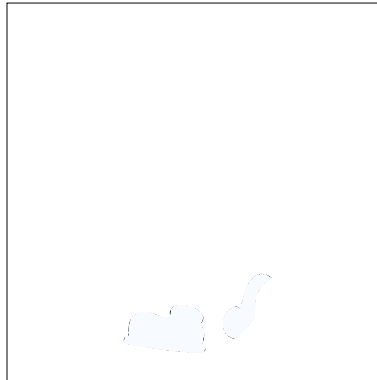
Stop Sequence:

#	N#	Color	St.	Code	Name	Chart
1.	2	Black	981	1000	Black	Madeira Classic 40
2.	3	White	2,325	1004	Natural White	Madeira Classic 40
3.	4	Brown	3,330	1329	Toasted Marshmallow	Madeira Classic 40
4.	2	Black	5,215	1000	Black	Madeira Classic 40
5.	3	White	6,791	1004	Natural White	Madeira Classic 40
6.	2	Black	7,767	1000	Black	Madeira Classic 40
7.	1	Red	18,554	1037	Red	Madeira Classic 40
8.	2	Black	22,432	1000	Black	Madeira Classic 40
9.	3	White	24,528	1004	Natural White	Madeira Classic 40
10.	2	Black	26,640	1000	Black	Madeira Classic 40

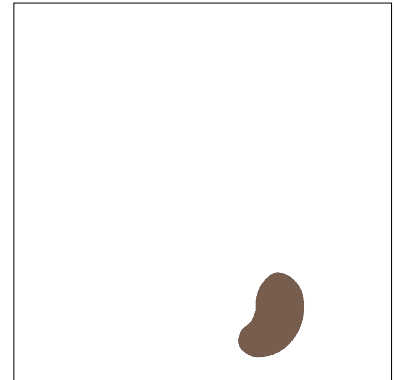




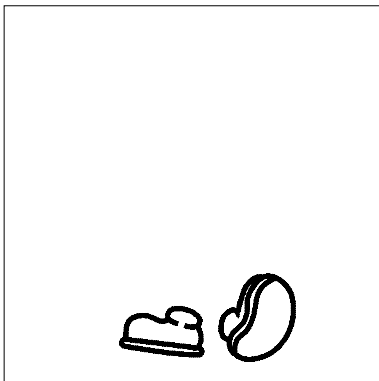
Stop #: 1
 Element:
 Code: 1000
 Name: Black
 Chart: Madeira Classic 40
 Stitches: 981
 Thread used: 7.18m



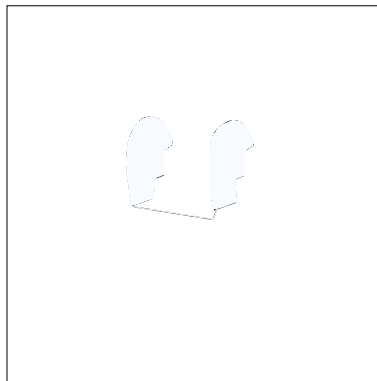
Stop #: 2
 Element:
 Code: 1004
 Name: Natural White
 Chart: Madeira Classic 40
 Stitches: 1,344
 Thread used: 7.47m



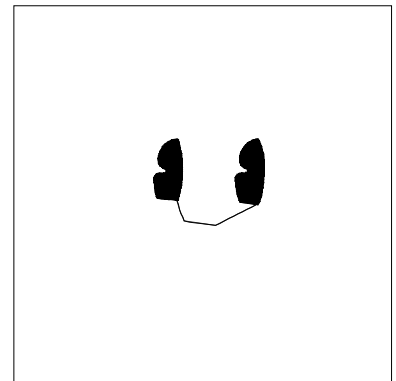
Stop #: 3
 Element:
 Code: 1329
 Name: Toasted Marshmallow
 Chart: Madeira Classic 40
 Stitches: 1,005
 Thread used: 6.22m



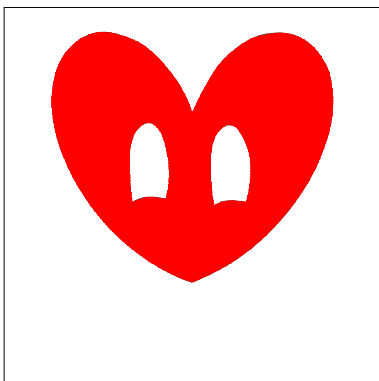
Stop #: 4
 Element:
 Code: 1000
 Name: Black
 Chart: Madeira Classic 40
 Stitches: 1,885
 Thread used: 8.11m



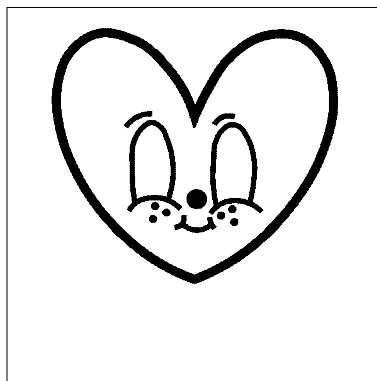
Stop #: 5
 Element:
 Code: 1004
 Name: Natural White
 Chart: Madeira Classic 40
 Stitches: 1,576
 Thread used: 9.47m



Stop #: 6
 Element:
 Code: 1000
 Name: Black
 Chart: Madeira Classic 40
 Stitches: 976
 Thread used: 5.36m



Stop #: 7
 Element:
 Code: 1037
 Name: Red
 Chart: Madeira Classic 40
 Stitches: 10,787
 Thread used: 72.83m



Stop #: 8
 Element:
 Code: 1000
 Name: Black
 Chart: Madeira Classic 40
 Stitches: 3,878
 Thread used: 20.82m



Stop #: 9
 Element:
 Code: 1004
 Name: Natural White
 Chart: Madeira Classic 40
 Stitches: 2,096
 Thread used: 11.78m

Color Film

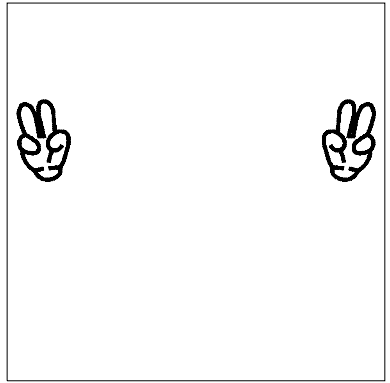
Wilcom EmbroideryStudio - Designing

HEART A 5X5

Design: **Heart A 5x5**

Title:

Stitches: 26,642
Height: 118.6 mm
Width: 127.0 mm
Colors: 4
Colorway: Colorway 1
Zoom: 0.37



Stop #: 10
Element:
Code: 1000
Name: Black
Chart: Madeira Classic 40
Stitches: 2,112
Thread used: 7.93m