

Production Worksheet

Wilcom EmbroideryStudio - Designing

ELEPHANT 5X5

Design: **Elephant 5x5**




Title:

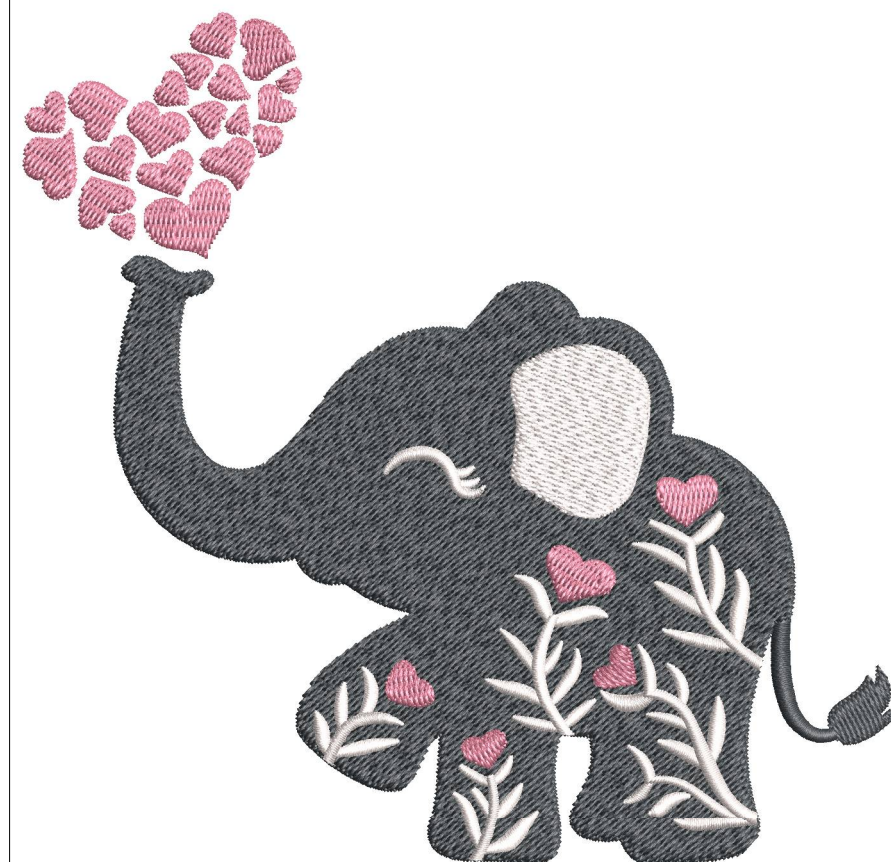
Stitches: 17,579
Height: 123.9 mm
Width: 126.7 mm
Colors: 3
Colorway: Colorway 1
Zoom: 0.91


support@zdigitizing.com

Machine format: Tajima
Color changes: 2
Stops: 3
Trims: 16
Left: 63.4 mm
Right: 63.3 mm
Up: 62.0 mm
Down: 62.0 mm
EndX: 0.0 mm
EndY: 0.0 mm
Area: 15700.2 mm²
Max stitch: 7.0 mm
Min stitch: 0.3 mm
Max jump: 7.0 mm

Stop Sequence:

#	N#	Color	St.	Code	Name	Chart
1.	2		10,242	1164	Twister	Madeira Classic 40
2.	1		14,239	1004	Natural White	Madeira Classic 40
3.	3		17,577	1108	Pink Carnation	Madeira Classic 40



Color Film

Wilcom EmbroideryStudio - Designing

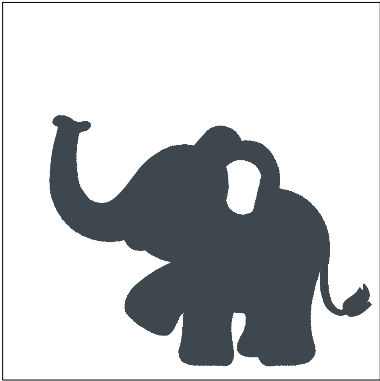
ELEPHANT 5X5

Design: **Elephant 5x5**

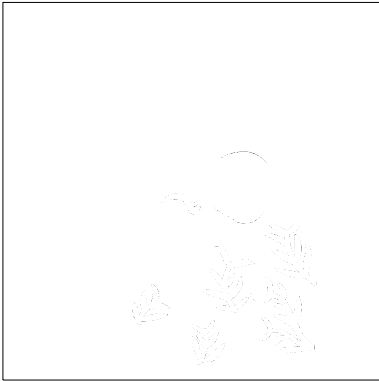
Title:

Stitches: 17,579
Height: 123.9 mm
Width: 126.7 mm
Colors: 3
Colorway: Colorway 1
Zoom: 0.37

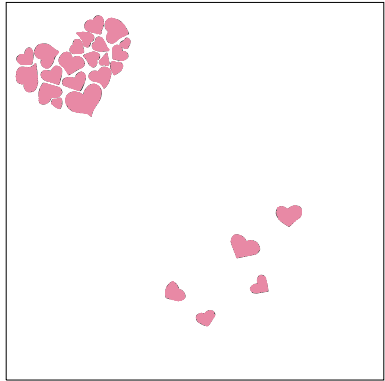
z digitizing
support@zdigitizing.com



Stop #: 1
Element:
Code: 1164
Name: Twister
Chart: Madeira Classic 40
Stitches: 10,242
Thread used: 67.46m



Stop #: 2
Element:
Code: 1004
Name: Natural White
Chart: Madeira Classic 40
Stitches: 3,997
Thread used: 18.19m



Stop #: 3
Element:
Code: 1108
Name: Pink Carnation
Chart: Madeira Classic 40
Stitches: 3,338
Thread used: 15.17m