

Production Worksheet

Wilcom EmbroideryStudio - Designing

* | *

Design: |

Title:

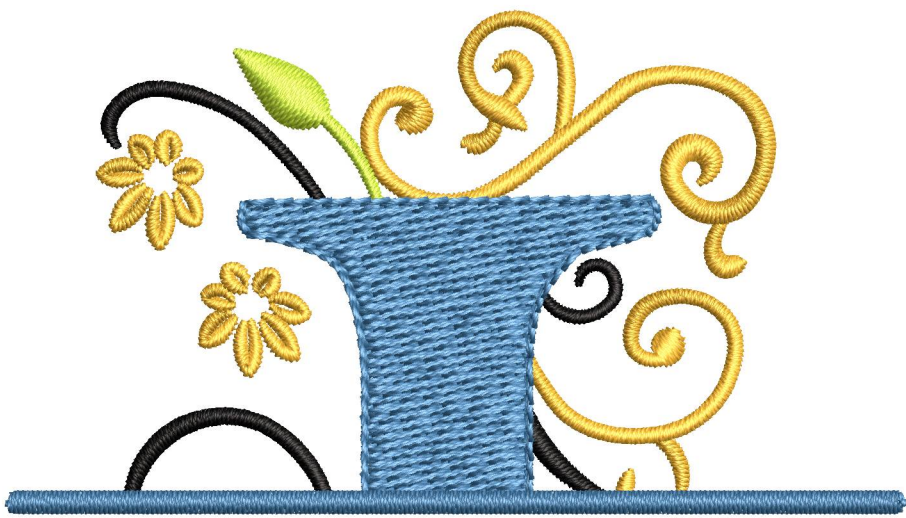
Stitches: 9,682
Height: 95.3 mm
Width: 70.9 mm
Colors: 4
Colorway: Colorway 1
Zoom: 1.67

z digitizing
support@zdigitizing.com

Machine format: Tajima
Color changes: 3
Stops: 4
Trims: 12
Left: 35.5 mm
Right: 35.5 mm
Up: 47.7 mm
Down: 47.7 mm
EndX: 0.0 mm
EndY: 0.0 mm
Area: 6762.3 mm²
Max stitch: 7.0 mm
Min stitch: 0.0 mm
Max jump: 7.0 mm

Stop Sequence:

#	N#	Color	St.	Code	Name	Chart
1.	3		4,732	1125	Saffron	Madeira Classic 40
2.	4		5,979	1000	Black	Madeira Classic 40
3.	2		6,255	1050	Green Thumb	Madeira Classic 40
4.	1		9,680	1029	Blue Jay	Madeira Classic 40



Color Film

Wilcom EmbroideryStudio - Designing

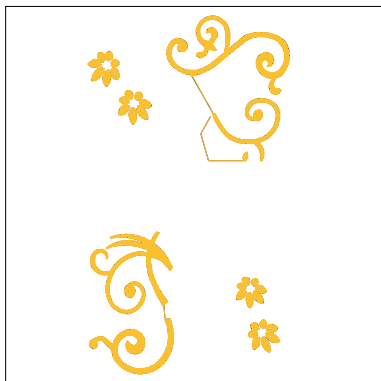
* | *

Design: |

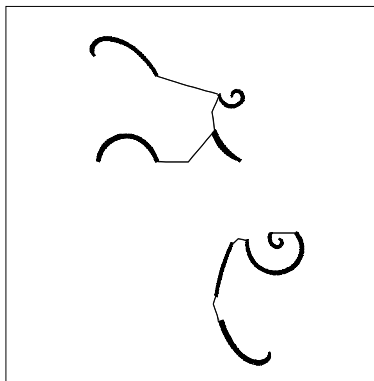
Title:

Stitches: 9,682
Height: 95.3 mm
Width: 70.9 mm
Colors: 4
Colorway: Colorway 1
Zoom: 0.50

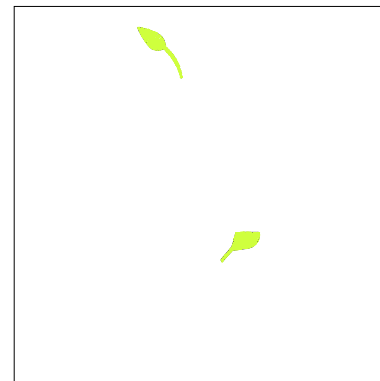
 **zdigitizing**
support@zdigitizing.com



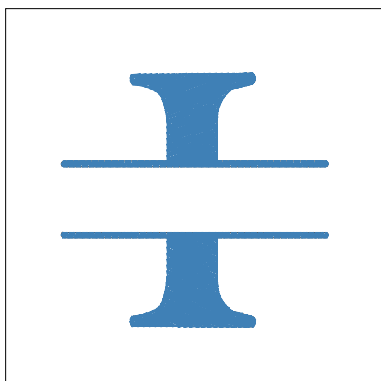
Stop #: 1
Element:
Code: 1125
Name: Saffron
Chart: Madeira Classic 40
Stitches: 4,732
Thread used: 16.65m



Stop #: 2
Element:
Code: 1000
Name: Black
Chart: Madeira Classic 40
Stitches: 1,247
Thread used: 4.38m



Stop #: 3
Element:
Code: 1050
Name: Green Thumb
Chart: Madeira Classic 40
Stitches: 276
Thread used: 1.33m



Stop #: 4
Element:
Code: 1029
Name: Blue Jay
Chart: Madeira Classic 40
Stitches: 3,425
Thread used: 18.08m