

Production Worksheet

Wilcom EmbroideryStudio - Designing

LADYBIRD 5X5

Design: **Ladybird 5x5**

Title:

Stitches: 2,407

Height: 126.8 mm

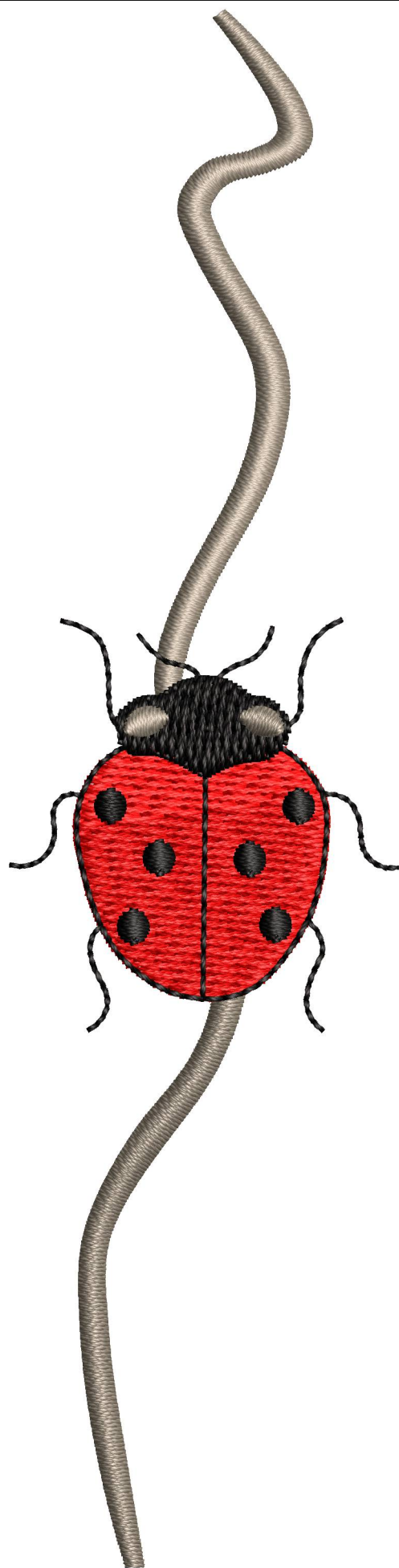
Width: 31.7 mm

Colors: 3

Colorway: Colorway 1

Zoom: 2.02

 **digitizing**
support@zdigitizing.com



Machine format: Tajima

Color changes: 3

Stops: 4

Trims: 10

Left: 15.8 mm

Right: 15.8 mm

Up: 63.4 mm

Down: 63.4 mm

EndX: 0.0 mm

EndY: 0.0 mm





Area: 4018.2 mm²

Max stitch: 7.0 mm

Min stitch: 0.3 mm

Max jump: 7.0 mm

Stop Sequence:

#	N#	Color	St.	Code	Name	Chart
1.	3		815	1062	Rhino	Madeira Classic 40
2.	1		1,616	1037	Cinnamon Candy	Madeira Classic 40
3.	2		2,322	1000		Madeira Classic 40
4.	3		2,405	1062	Rhino	Madeira Classic 40

Color Film

Wilcom EmbroideryStudio - Designing

LADYBIRD 5X5

Design: **Ladybird 5x5**

Title:

Stitches: 2,407

Height: 126.8 mm

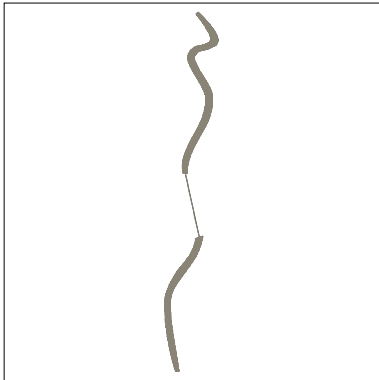
Width: 31.7 mm

Colors: 3

Colorway: Colorway 1

Zoom: 0.37

 **digitizing**
support@zdigitizing.com



Stop #: 1

Element:

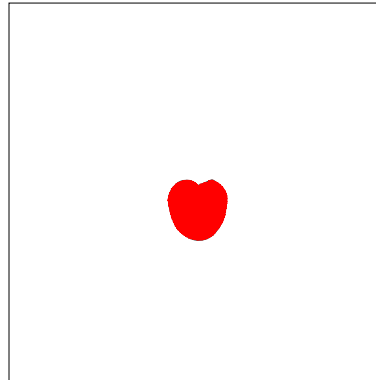
Code: 1062

Name: Rhino

Chart: Madeira Classic 40

Stitches: 815

Thread used: 4.21m



Stop #: 2

Element:

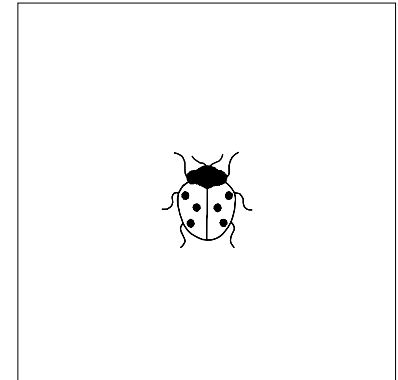
Code: 1037

Name: Cinnamon Candy

Chart: Madeira Classic 40

Stitches: 801

Thread used: 4.90m



Stop #: 3

Element:

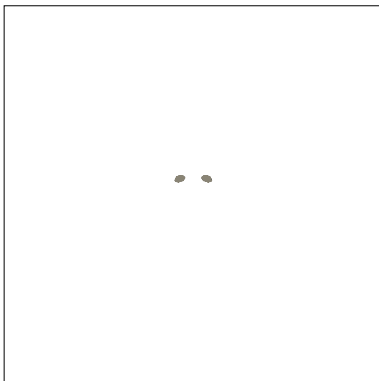
Code: 1000

Name:

Chart: Madeira Classic 40

Stitches: 706

Thread used: 2.98m



Stop #: 4

Element:

Code: 1062

Name: Rhino

Chart: Madeira Classic 40

Stitches: 83

Thread used: 0.30m