

# Production Worksheet

Wilcom EmbroideryStudio - Designing

## \*TREE 5X5\*

Design: **Tree 5x5**




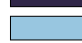

Title:

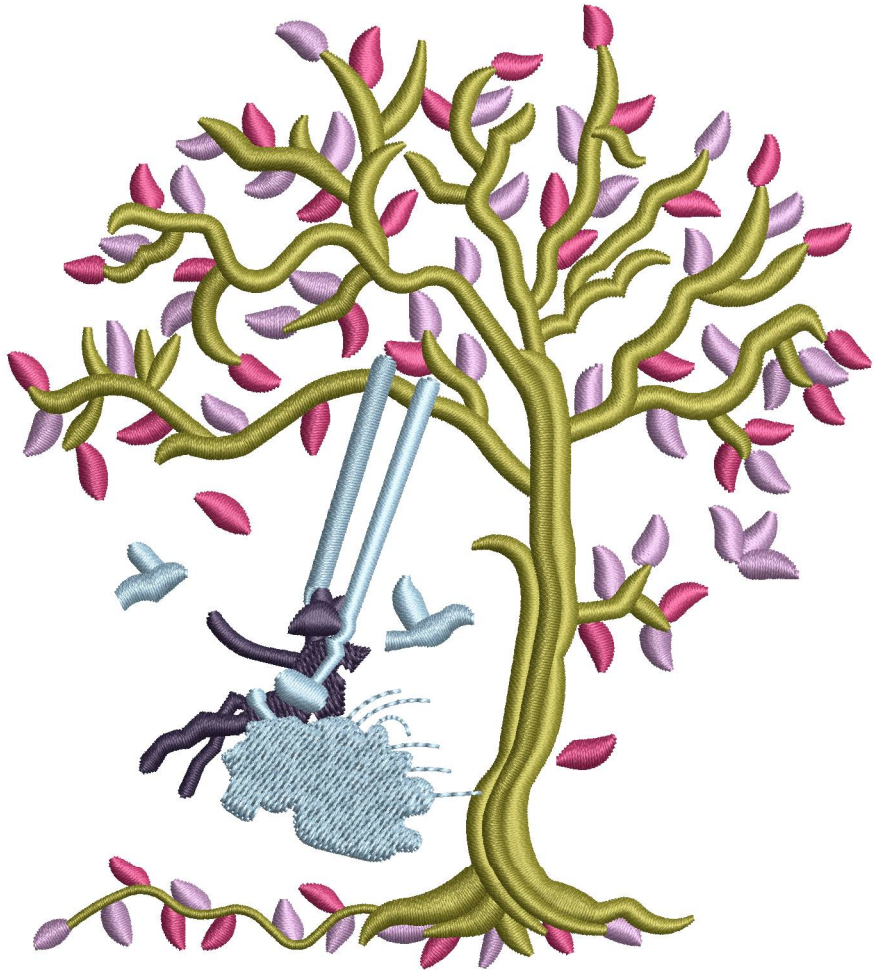
Stitches: 18,165  
Height: 126.8 mm  
Width: 113.6 mm  
Colors: 5  
Colorway: Colorway 1  
Zoom: 1.00

  
support@zdigitizing.com

Machine format: Tajima  
Color changes: 4  
Stops: 5  
Trims: 15  
Left: 56.8 mm  
Right: 56.8 mm  
Up: 63.4 mm  
Down: 63.4 mm  
EndX: 0.0 mm  
EndY: 0.0 mm  
Area: 14405.0 mm<sup>2</sup>  
Max stitch: 8.1 mm  
Min stitch: 0.1 mm  
Max jump: 7.2 mm

Stop Sequence:

#	N#	Color	St.	Code	Name	Chart
1.	5		3,317	1080	Lilac	Madeira Classic 40
2.	4		6,388	1110	Fuchsia	Madeira Classic 40
3.	3		14,967	1140	Avocado Green	Madeira Classic 40
4.	1		15,979	1313	Berry Blast	Madeira Classic 40
5.	2		18,163	1132	Clear Blue	Madeira Classic 40



# Color Film

Wilcom EmbroideryStudio - Designing

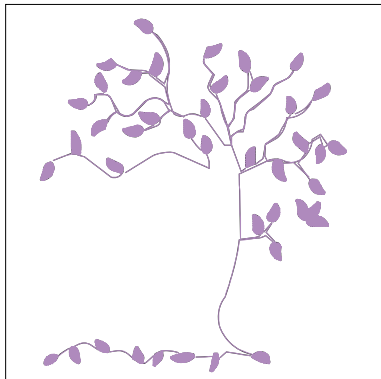
## \*TREE 5X5\*

Design: **Tree 5x5**

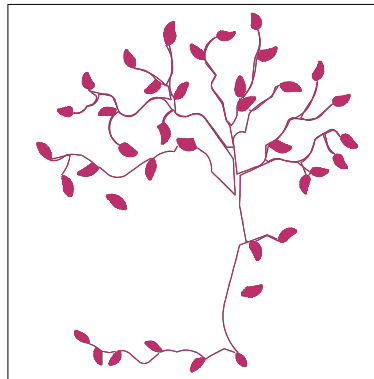
Title:

Stitches: 18,165  
Height: 126.8 mm  
Width: 113.6 mm  
Colors: 5  
Colorway: Colorway 1  
Zoom: 0.37

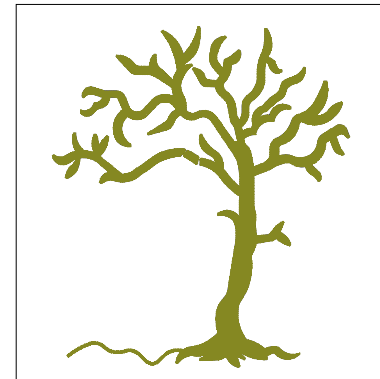
  
support@zdigitizing.com



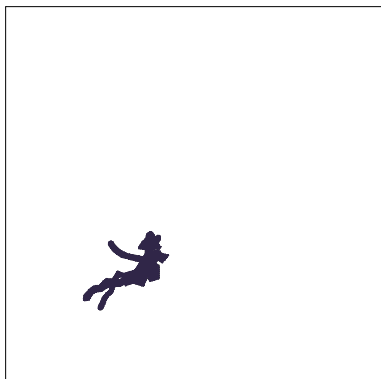
Stop #: 1  
Element:  
Code: 1080  
Name: Lilac  
Chart: Madeira Classic 40  
Stitches: 3,317  
Thread used: 17.25m



Stop #: 2  
Element:  
Code: 1110  
Name: Fuchsia  
Chart: Madeira Classic 40  
Stitches: 3,071  
Thread used: 15.29m



Stop #: 3  
Element:  
Code: 1140  
Name: Avocado Green  
Chart: Madeira Classic 40  
Stitches: 8,579  
Thread used: 45.73m



Stop #: 4  
Element:  
Code: 1313  
Name: Berry Blast  
Chart: Madeira Classic 40  
Stitches: 1,012  
Thread used: 4.82m



Stop #: 5  
Element:  
Code: 1132  
Name: Clear Blue  
Chart: Madeira Classic 40  
Stitches: 2,184  
Thread used: 11.75m