

Production Worksheet

Wilcom EmbroideryStudio - Designing

VETERANS DAY M 4X4

Design: **Veterans Day M 4x4**

Title:

Stitches: 18,334
Height: 94.9 mm
Width: 90.9 mm
Colors: 5
Colorway: Colorway 1
Zoom: 1.40


support@zdigitizing.com

Machine format: Tajima
Color changes: 8
Stops: 9
Trims: 63
Left: 45.5 mm
Right: 45.5 mm
Up: 47.4 mm
Down: 47.4 mm
EndX: 0.0 mm
EndY: 0.0 mm
Area: 8626.0 mm²
Max stitch: 11.4 mm
Min stitch: 0.0 mm
Max jump: 6.8 mm

Stop Sequence:

#	N#	Color	St.	Code	Name	Chart
1.	1	Red	4,402	1037	Red	Madeira Classic 40
2.	5	Dark Blue	7,380	1466		Madeira Classic 40
3.	4	White	10,166	1001	White	Madeira Classic 40
4.	1	Red	12,024	1037	Red	Madeira Classic 40
5.	5	Dark Blue	13,713	1466		Madeira Classic 40
6.	4	White	15,872	1001	White	Madeira Classic 40
7.	3	Black	16,915	1000	Black	Madeira Classic 40
8.	4	White	17,638	1001	White	Madeira Classic 40
9.	2	Liberty	18,332	1294	Liberty	Madeira Classic 40



Color Film

Wilcom EmbroideryStudio - Designing

VETERANS DAY M 4X4

Design: **Veterans Day M 4x4**

Title:

Stitches: 18,334
Height: 94.9 mm
Width: 90.9 mm
Colors: 5
Colorway: Colorway 1
Zoom: 0.50

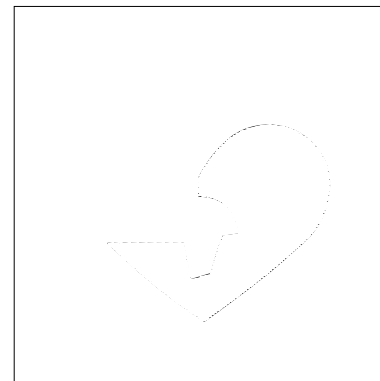

support@zdigitizing.com



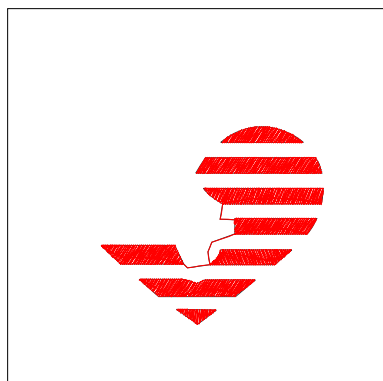
Stop #: 1
Element:
Code: 1037
Name: Red
Chart: Madeira Classic 40
Stitches: 4,402
Thread used: 17.18m



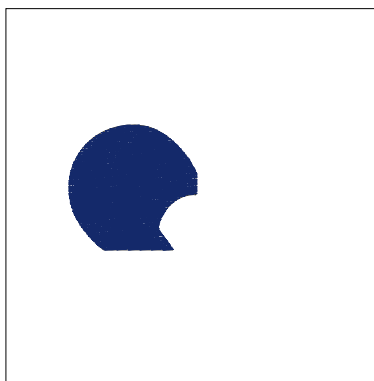
Stop #: 2
Element:
Code: 1466
Name:
Chart: Madeira Classic 40
Stitches: 2,978
Thread used: 13.69m



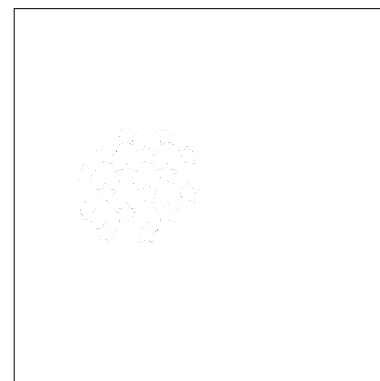
Stop #: 3
Element:
Code: 1001
Name: White
Chart: Madeira Classic 40
Stitches: 2,786
Thread used: 18.00m



Stop #: 4
Element:
Code: 1037
Name: Red
Chart: Madeira Classic 40
Stitches: 1,858
Thread used: 8.55m



Stop #: 5
Element:
Code: 1466
Name:
Chart: Madeira Classic 40
Stitches: 1,689
Thread used: 11.04m



Stop #: 6
Element:
Code: 1001
Name: White
Chart: Madeira Classic 40
Stitches: 2,159
Thread used: 7.57m

Color Film

Wilcom EmbroideryStudio - Designing

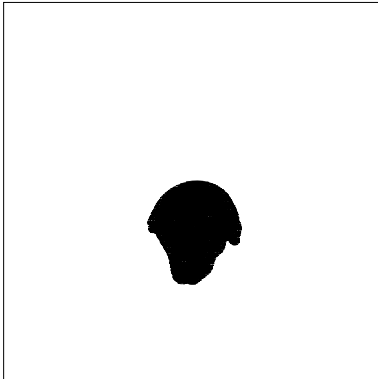
VETERANS DAY M 4X4

Design: **Veterans Day M 4x4**

Title:

Stitches: 18,334
Height: 94.9 mm
Width: 90.9 mm
Colors: 5
Colorway: Colorway 1
Zoom: 0.50

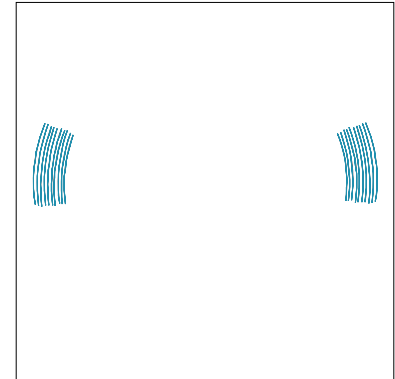

support@zdigitizing.com



Stop #: 7
Element:
Code: 1000
Name: Black
Chart: Madeira Classic 40
Stitches: 1,043
Thread used: 6.39m



Stop #: 8
Element:
Code: 1001
Name: White
Chart: Madeira Classic 40
Stitches: 723
Thread used: 2.62m



Stop #: 9
Element:
Code: 1294
Name: Liberty
Chart: Madeira Classic 40
Stitches: 694
Thread used: 3.08m