

Production Worksheet

Wilcom EmbroideryStudio - Designing

MOM WITH HEART 3X3

Design: **Mom with Heart 3x3**



Title:

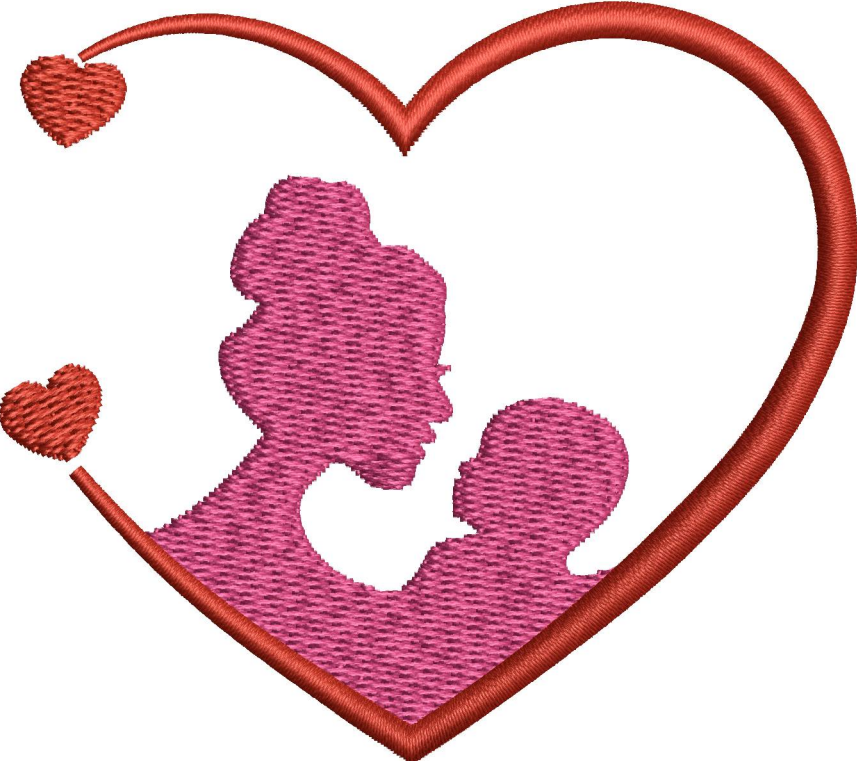
Stitches: 4,242
Height: 67.8 mm
Width: 76.4 mm
Colors: 2
Colorway: Colorway 1
Zoom: 1.48

z digitizing
support@zdigitizing.com
+1 (213) 788-6748

Machine format: Tajima
Color changes: 1
Stops: 2
Trims: 3
Left: 38.2 mm
Right: 38.2 mm
Up: 33.9 mm
Down: 33.9 mm
EndX: 0.0 mm
EndY: 0.0 mm
Area: 5173.9 mm²
Max stitch: 6.4 mm
Min stitch: 0.3 mm
Max jump: 6.5 mm

Stop Sequence:

#	N#	Color	St.	Code	Name	Chart
1.	2		2,452	1110	Fuchsia	Madeira Classic 40
2.	1		4,240	1037	Cinnamon Candy	Madeira Classic 40



Color Film

Wilcom EmbroideryStudio - Designing

MOM WITH HEART 3X3

Design: **Mom with Heart 3x3**

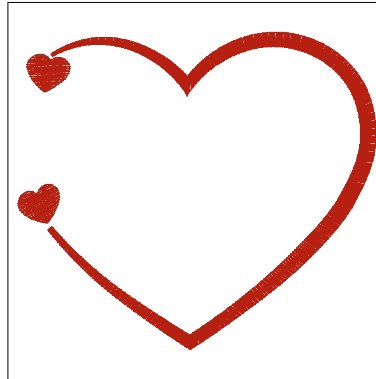
Title:

Stitches: 4,242
Height: 67.8 mm
Width: 76.4 mm
Colors: 2
Colorway: Colorway 1
Zoom: 0.62


support@zdigitizing.com
+1 (213) 788-6748



Stop #: 1
Element:
Code: 1110
Name: Fuchsia
Chart: Madeira Classic 40
Stitches: 2,452
Thread used: 14.70m



Stop #: 2
Element:
Code: 1037
Name: Cinnamon Candy
Chart: Madeira Classic 40
Stitches: 1,788
Thread used: 9.97m