

**Production Worksheet**

Wilcom EmbroideryStudio - Designing

**\*MOM WITH HEART 4X4\***

Design: **Mom with Heart 4x4**



Title:

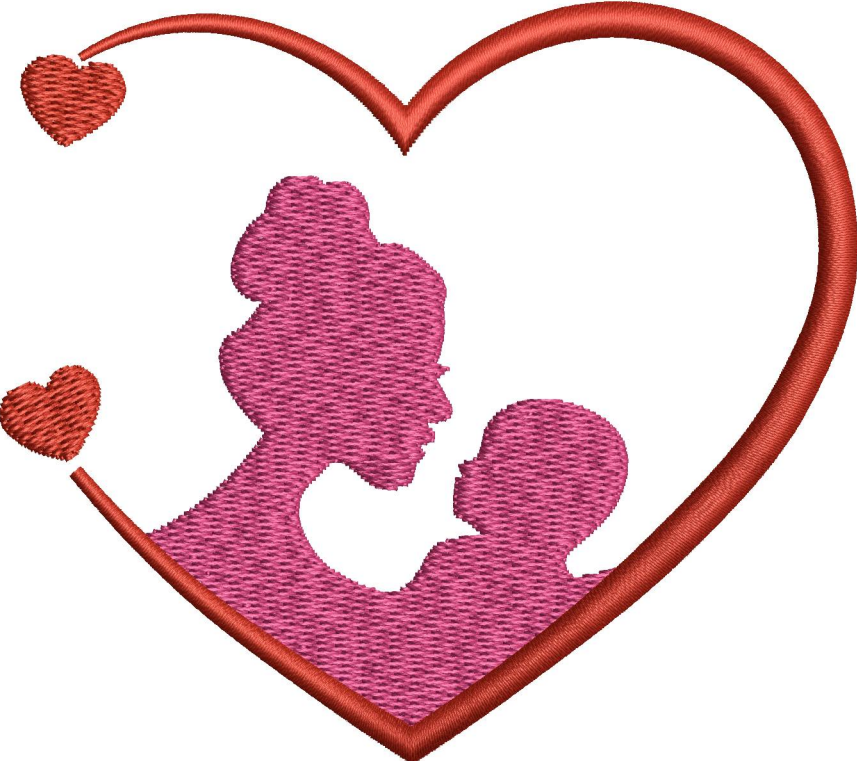
Stitches: 5,857  
Height: 84.6 mm  
Width: 95.3 mm  
Colors: 2  
Colorway: Colorway 1  
Zoom: 1.19

**z digitizing**  
support@zdigitizing.com  
**+1 (213) 788-6748**

Machine format: Tajima  
Color changes: 1  
Stops: 2  
Trims: 4  
Left: 47.7 mm  
Right: 47.7 mm  
Up: 42.3 mm  
Down: 42.3 mm  
EndX: 0.0 mm  
EndY: 0.0 mm  
Area: 8065.7 mm<sup>2</sup>  
Max stitch: 6.7 mm  
Min stitch: 0.4 mm  
Max jump: 6.7 mm

Stop Sequence:

#	N#	Color	St.	Code	Name	Chart
1.	2		3,571	1110	Fuchsia	Madeira Classic 40
2.	1		5,855	1037	Cinnamon Candy	Madeira Classic 40



# Color Film

Wilcom EmbroideryStudio - Designing

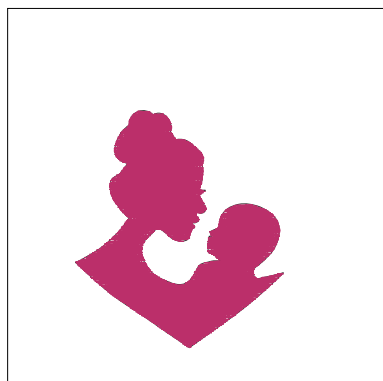
## \*MOM WITH HEART 4X4\*

Design: **Mom with Heart 4x4**

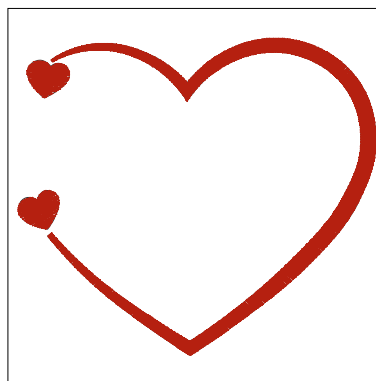
Title:

Stitches: 5,857  
Height: 84.6 mm  
Width: 95.3 mm  
Colors: 2  
Colorway: Colorway 1  
Zoom: 0.50

  
support@zdigitizing.com  
+1 (213) 788-6748



Stop #: 1  
Element:  
Code: 1110  
Name: Fuchsia  
Chart: Madeira Classic 40  
Stitches: 3,571  
Thread used: 22.14m



Stop #: 2  
Element:  
Code: 1037  
Name: Cinnamon Candy  
Chart: Madeira Classic 40  
Stitches: 2,284  
Thread used: 14.15m