

Production Worksheet

Wilcom EmbroideryStudio - Designing

AUNT 5X5

Design: **Aunt 5X5**

Title:

Stitches: 9,431
Height: 75.5 mm
Width: 126.9 mm
Colors: 3
Colorway: Colorway 1
Zoom: 1.65

z digitizing
support@zdigitizing.com
+1 (213) 788-6748



Production Worksheet

Wilcom EmbroideryStudio - Designing

* AUNT 5X5 *

Design: **Aunt 5X5**

Title:




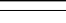

Stitches: 9,431
 Height: 75.5 mm
 Width: 126.9 mm
 Colors: 3
 Colorway: Colorway 1
 Zoom: 1.65



support@zdigitizing.com
 +1 (213) 788-6748

Machine format: Tajima
 Color changes: 4
 Stops: 5
 Trims: 8
 Appliqués: 0
 Left: 63.4 mm
 Right: 63.5 mm
 Up: 37.7 mm
 Down: 37.7 mm
 EndX: 0.0 mm
 EndY: 0.0 mm
 Area: 9577.0 mm²
 Max stitch: 8.8 mm
 Min stitch: 0.2 mm
 Max jump: 6.7 mm
 Total thread: 69.19m
 Total bobbin: 29.53m

Stop Sequence:

#	N#	Color	St.	Code	Name	Chart
1.	1		6,257	1244	Darkest Night	Madeira Classic 40
2.	3		7,732	1278	Orange Peel	Madeira Classic 40
3.	1		8,142	1244	Darkest Night	Madeira Classic 40
4.	2		9,286	1071	Baby?s Breath	Madeira Classic 40
5.	1		9,429	1244	Darkest Night	Madeira Classic 40

Color Film

Wilcom EmbroideryStudio - Designing

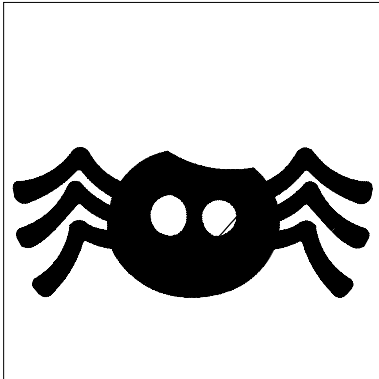
AUNT 5X5

Design: **Aunt 5X5**

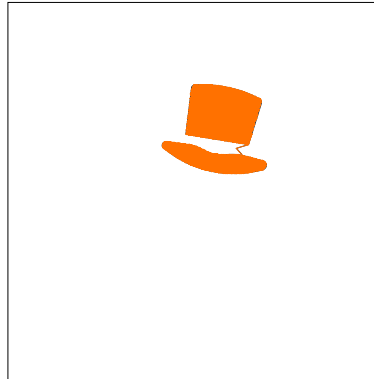
Title:

Stitches: 9,431
Height: 75.5 mm
Width: 126.9 mm
Colors: 3
Colorway: Colorway 1
Zoom: 0.37

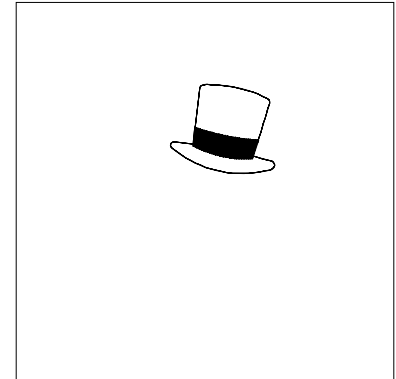

support@zdigitizing.com
+1 (213) 788-6748



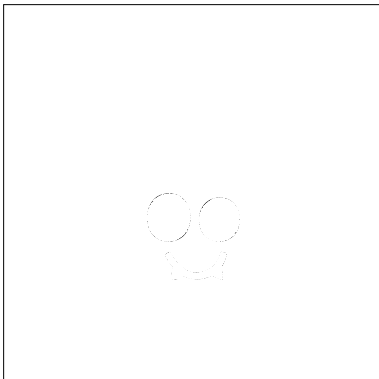
Stop #: 1
Element:
Code: 1244
Name: Darkest Night
Chart: Madeira Classic 40
Stitches: 6,257
Thread used: 49.28m



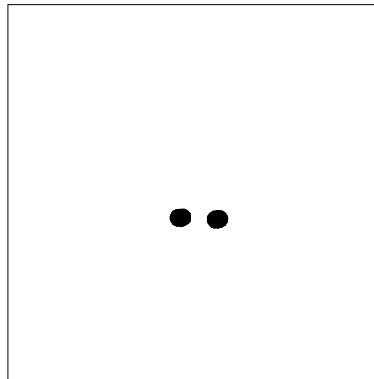
Stop #: 2
Element:
Code: 1278
Name: Orange Peel
Chart: Madeira Classic 40
Stitches: 1,475
Thread used: 8.69m



Stop #: 3
Element:
Code: 1244
Name: Darkest Night
Chart: Madeira Classic 40
Stitches: 410
Thread used: 3.02m



Stop #: 4
Element:
Code: 1071
Name: Baby's Breath
Chart: Madeira Classic 40
Stitches: 1,144
Thread used: 6.57m



Stop #: 5
Element:
Code: 1244
Name: Darkest Night
Chart: Madeira Classic 40
Stitches: 143
Thread used: 1.13m