

Production Worksheet

Wilcom EmbroideryStudio - Designing

CUTE MOUSE HUGGING HEART 4X4

Design: **Cute Mouse Hugging Heart 4x4**

Title:

Stitches: 8,520
Height: 3.74 in
Width: 3.29 in
Colors: 3
Colorway: Colorway 1
Zoom: 2.50

 **z digitizing**
support@zdigitizing.com
+1 (213) 788-6748



Production Worksheet

Wilcom EmbroideryStudio - Designing

CUTE MOUSE HUGGING HEART 4X4

Design: **Cute Mouse Hugging Heart 4x4**




Title:

Stitches: 8,520
Height: 3.74 in
Width: 3.29 in
Colors: 3
Colorway: Colorway 1
Zoom: 2.50

z digitizing
support@zdigitizing.com
+1 (213) 788-6748

Machine format: Tajima
Color changes: 2
Stops: 3
Trims: 18
Appliqués: 0
Left: 41.8 mm
Right: 41.8 mm
Up: 47.5 mm
Down: 47.5 mm
EndX: 0.00 in
EndY: 0.00 in
Area 12.30 in²
Max stitch: 10.5 mm
Min stitch: 0.3 mm
Max jump: 7.1 mm
Total thread: 138.28ft
Total bobbin: 48.23ft

Stop Sequence:

#	N#	Color	St.	Code	Name	Chart
1.	1		2,064	1220	Conch Shell	Madeira Classic 40
2.	2		8,428	1000		Madeira Classic 40
3.	3		8,518	1004	Natural White	Madeira Classic 40

Color Film

Wilcom EmbroideryStudio - Designing

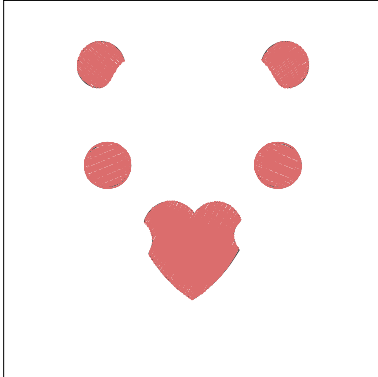
CUTE MOUSE HUGGING HEART 4X4

Design: **Cute Mouse Hugging Heart 4x4**

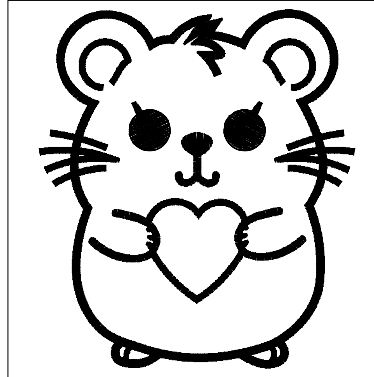
Title:

Stitches: 8,520
Height: 3.74 in
Width: 3.29 in
Colors: 3
Colorway: Colorway 1
Zoom: 0.50

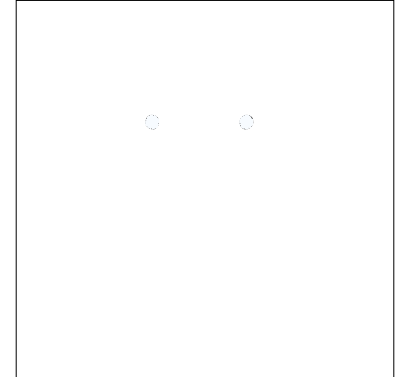
z digitizing
support@zdigitizing.com
+1 (213) 788-6748



Stop #: 1
Element:
Code: 1220
Name: Conch Shell
Chart: Madeira Classic 40
Stitches: 2,064
Thread used: 38.67ft



Stop #: 2
Element:
Code: 1000
Name:
Chart: Madeira Classic 40
Stitches: 6,364
Thread used: 97.21ft



Stop #: 3
Element:
Code: 1004
Name: Natural White
Chart: Madeira Classic 40
Stitches: 90
Thread used: 1.41ft