

Production Worksheet

Wilcom EmbroideryStudio - Designing

CUTE MOUSE HUGGING HEART 5X5

Design: **Cute Mouse Hugging Heart 5x5**

Title:

Stitches: 11,839
Height: 5.00 in
Width: 4.40 in
Colors: 3
Colorway: Colorway 1
Zoom: 1.87

z digitizing
support@zdigitizing.com
+1 (213) 788-6748



Production Worksheet

Wilcom EmbroideryStudio - Designing

CUTE MOUSE HUGGING HEART 5X5

Design: **Cute Mouse Hugging Heart 5x5**




Title:

Stitches: 11,839
Height: 5.00 in
Width: 4.40 in
Colors: 3
Colorway: Colorway 1
Zoom: 1.87

z digitizing
support@zdigitizing.com
+1 (213) 788-6748

Machine format: Tajima
Color changes: 2
Stops: 3
Trims: 18
Appliqués: 0
Left: 55.9 mm
Right: 55.9 mm
Up: 63.5 mm
Down: 63.5 mm
EndX: 0.00 in
EndY: 0.00 in
Area 21.99 in²
Max stitch: 11.3 mm
Min stitch: 0.3 mm
Max jump: 7.3 mm
Total thread: 216.40ft
Total bobbin: 81.62ft

Stop Sequence:

#	N#	Color	St.	Code	Name	Chart
1.	1		3,240	1220	Conch Shell	Madeira Classic 40
2.	2		11,727	1000		Madeira Classic 40
3.	3		11,837	1004	Natural White	Madeira Classic 40

Color Film

Wilcom EmbroideryStudio - Designing

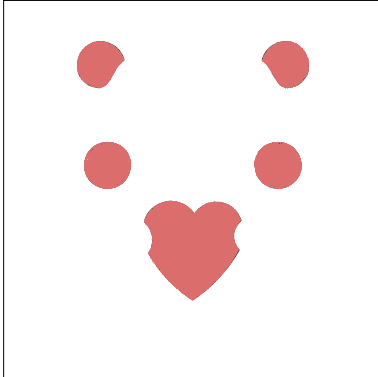
CUTE MOUSE HUGGING HEART 5X5

Design: **Cute Mouse Hugging Heart 5x5**

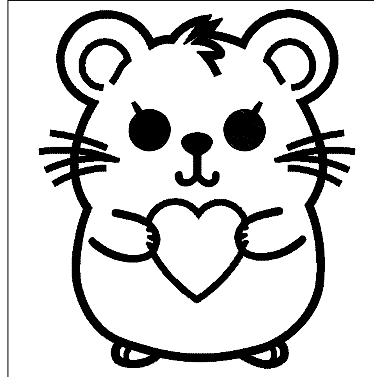
Title:

Stitches: 11,839
Height: 5.00 in
Width: 4.40 in
Colors: 3
Colorway: Colorway 1
Zoom: 0.37

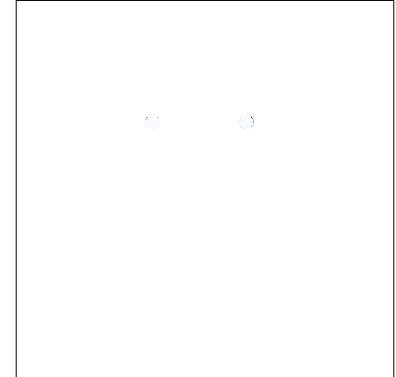
z digitizing
support@zdigitizing.com
+1 (213) 788-6748



Stop #: 1
Element:
Code: 1220
Name: Conch Shell
Chart: Madeira Classic 40
Stitches: 3,240
Thread used: 64.77ft



Stop #: 2
Element:
Code: 1000
Name:
Chart: Madeira Classic 40
Stitches: 8,487
Thread used: 148.61ft



Stop #: 3
Element:
Code: 1004
Name: Natural White
Chart: Madeira Classic 40
Stitches: 110
Thread used: 2.03ft