

Production Worksheet

Wilcom EmbroideryStudio - Designing

BEWARE 5X5

Design: **BEWARE 5x5**

Title:

Stitches: 8,124
Height: 4.54 in
Width: 5.00 in
Colors: 2
Colorway: Colorway 1
Zoom: 1.65

z digitizing
support@zdigitizing.com
+1 (213) 788-6748



Production Worksheet

Wilcom EmbroideryStudio - Designing

BEWARE 5X5

Design: **BEWARE 5x5**

Title:



Stitches: 8,124
 Height: 4.54 in
 Width: 5.00 in
 Colors: 2
 Colorway: Colorway 1
 Zoom: 1.65



support@zdigitizing.com
 +1 (213) 788-6748

Machine format: Tajima
 Color changes: 1
 Stops: 2
 Trims: 23
 Appliqués: 0
 Left: 63.5 mm
 Right: 63.5 mm
 Up: 57.6 mm
 Down: 57.6 mm
 EndX: 0.00 in
 EndY: 0.00 in
 Area 22.68 in²
 Max stitch: 7.0 mm
 Min stitch: 0.1 mm
 Max jump: 7.0 mm
 Total thread: 154.98ft
 Total bobbin: 59.86ft

Stop Sequence:

#	N#	Color	St.	Code	Name	Chart
1.	1		4,244	1000		Madeira Classic 40
2.	2		8,122	1188	Chokecherry	Madeira Classic 40

Color Film

Wilcom EmbroideryStudio - Designing

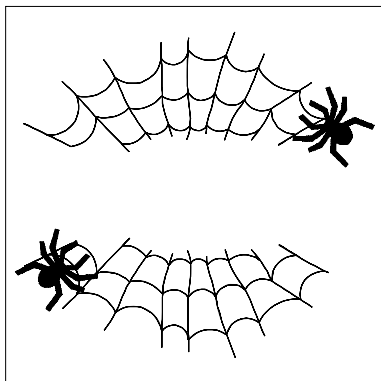
BEWARE 5X5

Design: **BEWARE 5x5**

Title:

Stitches: 8,124
Height: 4.54 in
Width: 5.00 in
Colors: 2
Colorway: Colorway 1
Zoom: 0.37

z digitizing
support@zdigitizing.com
+1 (213) 788-6748



Stop #: 1
Element:
Code: 1000
Name:
Chart: Madeira Classic 40
Stitches: 4,244
Thread used: 60.84ft



Stop #: 2
Element:
Code: 1188
Name: Chokecherry
Chart: Madeira Classic 40
Stitches: 3,878
Thread used: 93.47ft